

Recombinant Thyroglobulin (TG) Instruction Manual

SIPA673Ra01

Rattus norvegicus (Rat)

Source	Prokaryotic expression
Host	E.coli
Endotoxin Level	<1.0EU per 1µg (determined by the LAL method)
Subcellular Location	Secreted
Predicted Molecular Mass	43.3kDa
Accurate Molecular Mass	43kDa(Analysis of differences refer to the manual)
Residues & Tags	Cys1150~Cys1509 with N-terminal His Tag
Buffer Formulation	20mM Tris, 150mM NaCl, pH8.0, containing 1mM EDTA, 1mM DTT, 0.01% SKL, 5% Trehalose and Proclin300.
Traits	Freeze-dried powder
Purity	> 97%
Isoelectric Point	6.5
Applications	Positive Control; Immunogen; SDS-PAGE; WB.

SEQUENCE

```
DALKSRVLSR KVGLGYTPVC EALDGGFSPV QCDLAQGSCW CVLASGEEVP C  
GTRVVGTPQA CESPQCPLPF SGSDVTDGVV FCETASSSGV TTVQQCQLFC  
RQGLRNVFSP GPLICNLESQ RWVTLPLPRA CQRPQLWQTM QTQAHFQLLL  
PPGKMCSIDY SGLLQAFQVF ILDELITRGF CQIQVKTFGT LVSRTVCDNS  
SIQVGCLTAE RLGVNATWKL QLEDISVGSL PNLHSIERAL MGQDLLGRFA  
NLIQSGKFQL HLDKTFESAD TILYFLNGDR FVTSPMTQLG CLEGFYRVST  
TSQDPLGCVK CPEGSFSQDG KCTPCPAGTY QGQAGSSACI PCPRGRITTI  
TGAFSKTHC
```

USAGE

Reconstitute in 20mM Tris, 150mM NaCl (pH8.0) to a concentration of 0.1-1.0 mg/mL.
Do not vortex.

STORAGE

Avoid repeated freeze/thaw cycles. Store at 2-8°C for one month. Aliquot and store at -80°C for 12 months.

STABILITY

The thermal stability is described by the loss rate. The loss rate was determined by accelerated thermal degradation test, that is, incubate the protein at 37°C for 48h, and no obvious degradation and precipitation were observed. The loss rate is less than 5% within the expiration date under appropriate storage condition.

Image

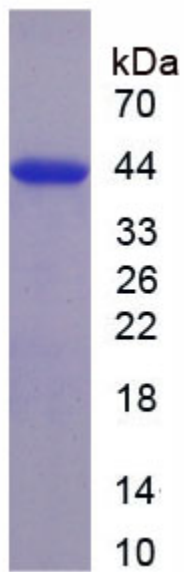


Figure. SDS-PAGE

[IMPORTANT NOTE]

The kit is designed for research use only, we will not be responsible for any issue if the kit was used in clinical diagnostic or any other procedures.