

Recombinant Galactosidase Alpha (GLa) Instruction Manual

SIPA700Hu04

Homo sapiens (Human)

Source	Prokaryotic expression
Host	E.coli
Endotoxin Level	<1.0EU per 1µg (determined by the LAL method)
Subcellular Location	Secreted
Predicted Molecular Mass	49.04kDa
Accurate Molecular Mass	44kDa(Analysis of differences refer to the manual)
Residues & Tags	Leu32~Leu429 with N-terminal His Tag
Buffer Formulation	20mM Tris, 150mM NaCl, pH8.0, containing 1mM EDTA, 1mM DTT, 0.01% SKL, 5% Trehalose and Proclin300.
Traits	Freeze-dried powder
Purity	> 95%
Isoelectric Point	5.0
Applications	Positive Control; Immunogen; SDS-PAGE; WB.

SEQUENCE

```
LDNGLARTP TMGWLHWERF
MCNLDCQEEP DSCISEKLFM EMAELMVSEG WKDAGYEYLC IDDCWMAPQR
DSEGRQLQADP QRFPHGIRQL ANYVHSKGLK LGIYADVGNK TCAGFPGSFG
YYDIDAQTFA DWGVDLLKFD GCYCDSLENL ADGYKHMSLA LNRTGRSIVY
SCEWPLYMWP FQKPNYTEIR QYCNHWRNFA DIDDSWKSIK SILDWTSFNQ
ERIVDVAGPG GWNDPMLVI GNFGLSWNQQ VTQMALWAIM AAPLFMSNDL
RHISPQAKAL LQDKDVIAIN QDPLGKQGYQ LRQGDNFEVW ERPLSGLAWA
VAMINRQEIG GPRSYTIAVA SLGKGVACNP ACFITQLLPV KRKLGFEWET
SRLRSHINPT GTVLLQLENT MQMSLKDLL
```

USAGE

Reconstitute in 20mM Tris, 150mM NaCl (pH8.0) to a concentration of 0.1-1.0 mg/mL.
Do not vortex.

STORAGE

Avoid repeated freeze/thaw cycles. Store at 2-8°C for one month. Aliquot and store at -80°C for 12 months.

STABILITY

The thermal stability is described by the loss rate. The loss rate was determined by accelerated thermal degradation test, that is, incubate the protein at 37°C for 48h, and no obvious degradation and precipitation were observed. The loss rate is less than 5% within the expiration date under appropriate storage condition.

Image

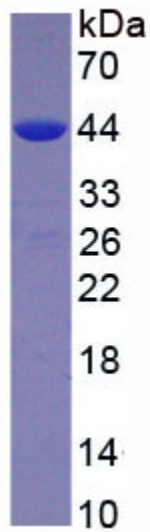


Figure. SDS-PAGE

[IMPORTANT NOTE]

The kit is designed for research use only, we will not be responsible for any issue if the kit was used in clinical diagnostic or any other procedures.