

Recombinant Latrophilin 3 (LPHN3) Instruction Manual

SIPA745Hu01

Homo sapiens (Human)

Source	Prokaryotic expression
Host	E.coli
Endotoxin Level	<1.0EU per 1µg (determined by the LAL method)
Subcellular Location	Membrane
Predicted Molecular Mass	41.7kDa
Accurate Molecular Mass	42kDa(Analysis of differences refer to the manual)
Residues & Tags	Gln1105~Leu1447 with N-terminal His Tag
Buffer Formulation	20mM Tris, 150mM NaCl, pH8.0, containing 1mM EDTA, 1mM DTT, 0.01% SKL, 5% Trehalose and Proclin300.
Traits	Freeze-dried powder
Purity	> 95%
Isoelectric Point	6.8
Applications	Positive Control; Immunogen; SDS-PAGE; WB.

SEQUENCE

```
QKKVRK EYGKCLRTHC CSGKSTESSI GSGKTSRSRT PGRYSTGSQS  
RIRRMWNDTV RKQSESSFIT GDINSSASLN REGLLNNARD TSVMOTLPLN  
GNHGNSYSIA SGEYLSNCVQ IIDRGYNHNE TALEKKILKE LTSNYIPSYL  
NNHERSSEQN RNL MNKLVNN LGSGREDDAI VLDDATSFNH EESLGLELIH  
EESDAPLLPP RVYSTENHQP HHYTRRRIPQ DHSEFFPLL TNEHTEDLQS  
PHRDSLYTSM PTLAGVAATE SVTTSTQTEP PPAKCGDAED VYYKSPNPLG  
SRNHVHQLHT YYQLGRGSSD GFIVPPNKDG TPPEGSSKGP AHLVTSL
```

USAGE

Reconstitute in 20mM Tris, 150mM NaCl (pH8.0) to a concentration of 0.1-1.0 mg/mL.
Do not vortex.

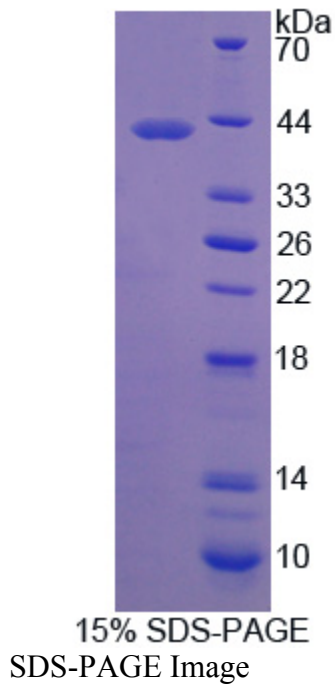
STORAGE

Avoid repeated freeze/thaw cycles. Store at 2-8°C for one month. Aliquot and store at -80°C for 12 months.

STABILITY

The thermal stability is described by the loss rate. The loss rate was determined by accelerated thermal degradation test, that is, incubate the protein at 37°C for 48h, and no obvious degradation and precipitation were observed. The loss rate is less than 5% within the expiration date under appropriate storage condition.

Image



[IMPORTANT NOTE]

The kit is designed for research use only, we will not be responsible for any issue if the kit was used in clinical diagnostic or any other procedures.