

Recombinant Glucokinase (GCK) Instruction Manual

SIPA846Ra01

Rattus norvegicus (Rat)

Source	Prokaryotic expression
Host	E.coli
Endotoxin Level	<1.0EU per 1µg (determined by the LAL method)
Subcellular Location	Nucleus, Cytoplasm
Predicted Molecular Mass	54.1kDa
Accurate Molecular Mass	54kDa(Analysis of differences refer to the manual)
Residues & Tags	Asp194~Gly410 with N-terminal His and GST Tag
Buffer Formulation	20mM Tris, 150mM NaCl, pH8.0, containing 0.01% SKL, 5% Trehalose.
Traits	Freeze-dried powder
Purity	> 90%
Isoelectric Point	4.5
Applications	Positive Control; Immunogen; SDS-PAGE; WB.

SEQUENCE

```
AMVNDTVATM  ISCYIEDRQC  EVGMIVGTGC  NACYMEEMQN  VELVEGDEGR  
MCVNTEWAF  GDSGELDEFL  LEYDRMVDES  SANPGQQLYE  KIIGGKYMGE  
LVRLVLLKLV  DENLLFHGEA  SEQLRTRGAF  ETRFVSQVES  DSGDRKQIHN  
ILSTLGLRPS  VTDCDIVRRA  CESVSTRAAH  MCSAGLAGVI  NRMRESRSED  
VMRITVGVDG
```

USAGE

Reconstitute in ddH₂O to a concentration of 0.1-0.5 mg/mL. Do not vortex.

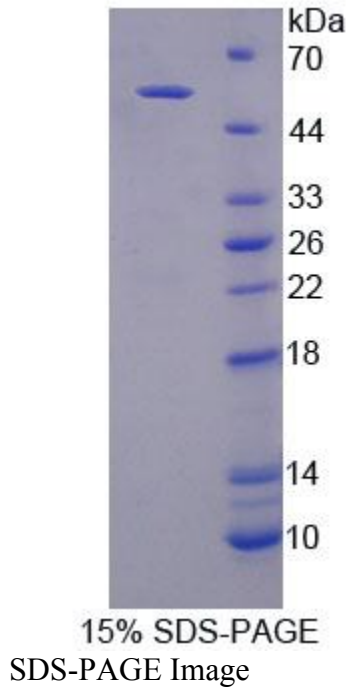
STORAGE

Avoid repeated freeze/thaw cycles. Store at 2-8°C for one month. Aliquot and store at -80°C for 12 months.

STABILITY

The thermal stability is described by the loss rate. The loss rate was determined by accelerated thermal degradation test, that is, incubate the protein at 37°C for 48h, and no obvious degradation and precipitation were observed. The loss rate is less than 5% within the expiration date under appropriate storage condition.

Image



[IMPORTANT NOTE]

The kit is designed for research use only, we will not be responsible for any issue if the kit was used in clinical diagnostic or any other procedures.