

# Recombinant Cyclooxygenase-2 (COX 2) Instruction Manual

SIPA856Hu03

**Homo sapiens (Human)**

<b>Source</b>	Prokaryotic expression
<b>Host</b>	E.coli
<b>Endotoxin Level</b>	<1.0EU per 1µg (determined by the LAL method)
<b>Subcellular Location</b>	Membrane, Nucleus, Endoplasmic reticulum lumen
<b>Predicted Molecular Mass</b>	69.1kDa
<b>Accurate Molecular Mass</b>	67kDa(Analysis of differences refer to the manual)
<b>Residues &amp; Tags</b>	Asn19~Asp589 with N-terminal His Tag
<b>Buffer Formulation</b>	PBS, pH7.4, containing 0.01% SKL, 5% Trehalose.
<b>Traits</b>	Freeze-dried powder
<b>Purity</b>	> 90%
<b>Isoelectric Point</b>	7.4
<b>Applications</b>	Positive Control; Immunogen; SDS-PAGE; WB.

## SEQUENCE

```
NP CCSHPCQNRG VCMSVGFQDY KCDTRTGFY
GENCSTPEFL TRIKLFKPT PNTVHYILTH FKGFWNVVNN IPFLRNAIMS
YVLTSRSHLI DSPPTYNADY GYKSWEAFSN LSYSTRALPP VPDDCPTPLG
VKGKKQLPDS NEIVEKLLLR RKFIPDPQGS NMMFAFFAQH FTHQFFKTDH
KRGPAFTNGL GHGVDLNHIY GETLARQRKL RLFKDGKMKY QIIDGEMYPP
TVKDTQAEMI YPPQVPEHLR FAVGQEVFGL VPGLMMYATI WLREHNRVCD
VLKQEHPEWG DEQLFQTSRL ILIGETIKIV IEDYVQHLSG YHFKLKFDPE
LLFNKQFQYQ NRIAAEFNTL YHWHPLLPDT FQIHDQKYNQ QQFIYNNSIL
LEHGITQFVE SFTRQIAGRV AGGRNVPPAV QKVSQASIDQ SRQMKYQSFN
EYRKRFMLKP YESFEELTGE KEMSAELEAL YGDIDAVELY PALLVEKPRP
DAIFGETMVE VGAPFSLKGL MGNVICSPAY WKPSTFGGEV GFQIINTASI
QSLICNNVKG CPFTSFSVPD PELIKTVTIN ASSRSGLD
```

## USAGE

Reconstitute in 10mM PBS (pH7.4) to a concentration of 0.1-1.0 mg/mL. Do not vortex.

## STORAGE

Avoid repeated freeze/thaw cycles. Store at 2-8°C for one month. Aliquot and store at -80°C for 12 months.

## STABILITY

The thermal stability is described by the loss rate. The loss rate was determined by accelerated thermal degradation test, that is, incubate the protein at 37°C for 48h, and no obvious degradation and precipitation were observed. The loss rate is less than 5% within the expiration date under appropriate storage condition.

## Image

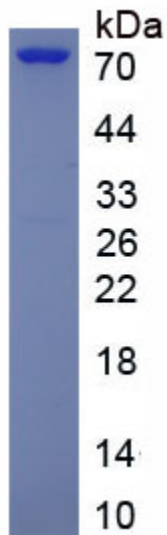


Figure. SDS-PAGE

## **[IMPORTANT NOTE]**

The kit is designed for research use only, we will not be responsible for any issue if the kit was used in clinical diagnostic or any other procedures.