

Recombinant Toll Like Receptor 9 (TLR9) Instruction Manual

SIPA860Hu01

Homo sapiens (Human)

Source	Prokaryotic expression
Host	E.coli
Endotoxin Level	<1.0EU per 1µg (determined by the LAL method)
Subcellular Location	Lysosome, Cytoplasm, Endoplasmic reticulum lumen, Endosome
Predicted Molecular Mass	41.1kDa
Accurate Molecular Mass	41kDa(Analysis of differences refer to the manual)
Residues & Tags	Thr28~Ser362 with N-terminal His Tag
Buffer Formulation	PBS, pH7.4, containing 0.01% SKL, 5% Trehalose.
Traits	Freeze-dried powder
Purity	> 97%
Isoelectric Point	9.1
Applications	Positive Control; Immunogen; SDS-PAGE; WB.

SEQUENCE

```
                TLP AFLPCELQPH GLVNCNWLFL  
KSVPHFSMAA PRGNVTSLSL SSNRIHHLHD SFAHLPSLR HLNLKWNCPP  
VGLSPMHFPC HMTIEPSTFL AVPTLEELNL SYNIMTVPA LPKSLISLSL  
SHTNILMLDS ASLAGLHALR FLFMDGNCYY KNPCRQALEV APGALLGLGN  
LTHLSLKYNN LTVVPRNLPS SLEYLLLSYN RIVKLAPEDL ANLTALRVLD  
VGGNCRCDH APNPCMECPR HFPQLHPDTF SHLSRLEGLV LKDSSLSWLN  
ASWFRGLGNL RVLDLSENFL YKCITKTKAF QGLTQLRKLN LSFNYQKRVS  
FAHLSLAPSF GS
```

USAGE

Reconstitute in ddH₂O to a concentration of 0.1-0.5 mg/mL. Do not vortex.

STORAGE

Avoid repeated freeze/thaw cycles. Store at 2-8°C for one month. Aliquot and store at -80°C for 12 months.

STABILITY

The thermal stability is described by the loss rate. The loss rate was determined by accelerated thermal degradation test, that is, incubate the protein at 37°C for 48h, and no obvious degradation and precipitation were observed. The loss rate is less than 5% within the expiration date under appropriate storage condition.

Image

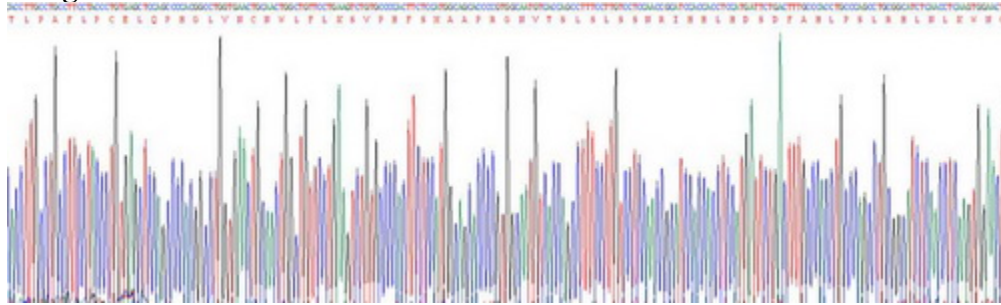


Figure. SDS-PAGE

[IMPORTANT NOTE]

The kit is designed for research use only, we will not be responsible for any issue if the kit was used in clinical diagnostic or any other procedures.