

Recombinant Alkaline Sphingomyelinase (Alk-Smase) Instruction Manual

SIPA890Ra01

Rattus norvegicus (Rat)

Source	Prokaryotic expression
Host	E.coli
Endotoxin Level	<1.0EU per 1µg (determined by the LAL method).
Subcellular Location	Membrane
Predicted Molecular Mass	51.5kDa
Accurate Molecular Mass	51kDa(Analysis of differences refer to the manual)
Residues & Tags	Gly22~Val439 with N-terminal His Tag
Buffer Formulation	20mM Tris, 150mM NaCl, pH8.0, containing 1mM EDTA, 1mM DTT, 0.01% SKL, 5% Trehalose and Proclin300.
Traits	Freeze-dried powder
Purity	> 95%
Isoelectric Point	6.6
Applications	Positive Control; Immunogen; SDS-PAGE; WB.

SEQUENCE

```
GPVQRQQQH KLLLVSFDGF RWNVDQDVET  
PNLDSMAQEG VKARYMTPAF VTMTSPCHFT LVTGKYIENH GVVHNMFYNT  
TNKVRLPYHA TLGIQRWWDN GSIPIWITAQ RQGLKTGSFF YPGGNVTYQG  
EAVTMSRKEG VLHNYKNETE WRANVDTVMK WFTEEDVSLV TLYFGEPDST  
GHKYGPESQE RKDMVKQVDR TVGYLRDSIK RHHLTDSLNL IITSDHGMTT  
VNKKASDLVE FHKFPNFTFR DIEFELLDYG PNGMLIPKEG MLEKVYSVLK  
DAHPR LHVYK KEDFPKTFHY ANNPRITSL L MYSDLGYVIH GRVNVQFNSG  
EHGFDNQDMD MKTIFRAVGP SFKAGLEVEP FESVHVYELM CQLLGIVPEP  
NDGHPGVLQP MLRSGSPLSR QHHLVVVLMG ILTGLAKVV
```

USAGE

Reconstitute in 20mM Tris, 150mM NaCl (pH8.0) to a concentration of 0.1-1.0 mg/mL. Do not vortex.

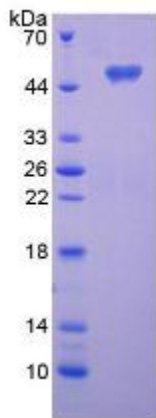
STORAGE

Avoid repeated freeze/thaw cycles. Store at 2-8°C for one month. Aliquot and store at -80°C for 12 months.

STABILITY

The thermal stability is described by the loss rate. The loss rate was determined by accelerated thermal degradation test, that is, incubate the protein at 37°C for 48h, and no obvious degradation and precipitation were observed. The loss rate is less than 5% within the expiration date under appropriate storage condition.

Image



SDS-PAGE Image

[IMPORTANT NOTE]

The kit is designed for research use only, we will not be responsible for any issue if the kit was used in clinical diagnostic or any other procedures.