

Recombinant Intelectin 1 (ITLN1) Instruction Manual

SIPA910Hu01

Homo sapiens (Human)

Source	Prokaryotic expression
Host	E.coli
Endotoxin Level	<1.0EU per 1µg (determined by the LAL method).
Subcellular Location	Membrane, Secreted, Chromosome
Predicted Molecular Mass	28.4kDa
Accurate Molecular Mass	28kDa(Analysis of differences refer to the manual)
Residues & Tags	Cys31~Gly253 with N-terminal His Tag
Buffer Formulation	PBS, pH7.4, containing 0.01% SKL, 5% Trehalose.
Traits	Freeze-dried powder
Purity	> 90%
Isoelectric Point	7.2
Applications	Positive Control; Immunogen; SDS-PAGE; WB.

SEQUENCE

```
                                C S S S P S L P R S   C K E I K D E C P S  
A F D G L Y F L R T   E N G V I Y Q T F C   D M T S G G G G W T   L V A S V H E N D M   R G K C T V G D R W  
S S Q Q G S K A V Y   P E G D G N W A N Y   N T F G S A E A A T   S D D Y K N P G Y Y   D I Q A K D L G I W  
H V P N K S P M Q H   W R N S S L L R Y R   T D T G F L Q T L G   H N L F G I Y Q K Y   P V K Y G E G K C W  
T D N G P V I P V V   Y D F G D A Q K T A   S Y Y S P Y G Q R E   F T A G F V Q F R V   F N N E R A A N A L  
C A G
```

USAGE

Reconstitute in 10mM PBS (pH7.4) to a concentration of 0.1-1.0 mg/mL. Do not vortex.

STORAGE

Avoid repeated freeze/thaw cycles. Store at 2-8°C for one month. Aliquot and store at -80°C for 12 months.

STABILITY

The thermal stability is described by the loss rate. The loss rate was determined by accelerated thermal degradation test, that is, incubate the protein at 37°C for 48h, and no obvious degradation and precipitation were observed. The loss rate is less than 5% within the expiration date under appropriate storage condition.

Image

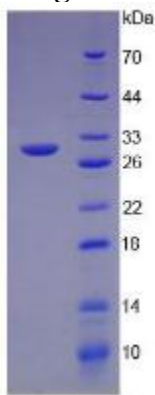


Figure. SDS-PAGE

[IMPORTANT NOTE]

The kit is designed for research use only, we will not be responsible for any issue if the kit was used in clinical diagnostic or any other procedures.