

Recombinant Low Density Lipoprotein Receptor Related Protein 1 (LRP1) Instruction Manual

SIPB006Hu02

Homo sapiens (Human)

Source	Prokaryotic expression
Host	E.coli
Endotoxin Level	<1.0EU per 1µg (determined by the LAL method)
Subcellular Location	Membrane, Nucleus, Golgi apparatus
Predicted Molecular Mass	49.2kDa
Accurate Molecular Mass	49kDa(Analysis of differences refer to the manual)
Residues & Tags	Ala20~Asp429 with N-terminal His Tag
Buffer Formulation	PBS, pH7.4, containing 0.01% SKL, 1mM DTT, 5% Trehalose and Proclin300.
Traits	Freeze-dried powder
Purity	> 90%
Isoelectric Point	4.7
Applications	Positive Control; Immunogen; SDS-PAGE; WB.

SEQUENCE

```
A IDAPKTCSPK QFACRDQITC ISKGWRCDGE
RDCPDGSDEA PEICPQSKAQ RCQPNEHNCL GTELCVPMSR LCNGVQDCMD
GSDEGPHCRE LQGNCSRLGC QHHCVPITLDG PTCYCNSSFQ LQADGKTCKD
FDECSVYGTC SQLCTNTDGS FICGCVGYL LQPDNRSCKA KNEPVDRPPV
LLIANSQNIL ATYLSGAQVS TITPTSTRQT TAMDFS YANE TVCWVHVGDS
AAQTQLKCAR MPGLKGFVDE HTINISLSLH HVEQMAIDWL TGNFYFVDDI
DDRIFVCNRM GDTCVTLDDL ELYNPKGIAL DPAMKGVFFT DYGQIPKVER
CDMDGQNRK LVDSKIVFPH GITLDLVSRL VYWADAYLDY IEVVDYEGKG
RQTIIQGILI EHLVGLTVFE NYLYATNSD
```

USAGE

Reconstitute in 10mM PBS (pH7.4) to a concentration of 0.1-1.0 mg/mL. Do not vortex.

STORAGE

Avoid repeated freeze/thaw cycles. Store at 2-8°C for one month. Aliquot and store at -80°C for 12 months.

STABILITY

The thermal stability is described by the loss rate. The loss rate was determined by accelerated thermal degradation test, that is, incubate the protein at 37°C for 48h, and no obvious degradation and precipitation were observed. The loss rate is less than 5% within the expiration date under appropriate storage condition.

Image

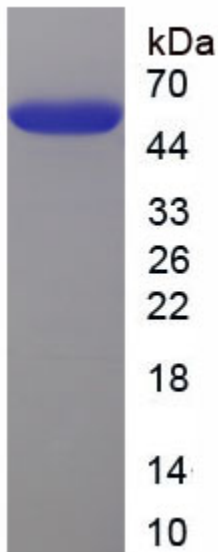


Figure. SDS-PAGE

[IMPORTANT NOTE]

The kit is designed for research use only, we will not be responsible for any issue if the kit was used in clinical diagnostic or any other procedures.