

Recombinant Alkaline Phosphatase, Intestinal (ALPI) Instruction Manual

SIPB056Hu01

Homo sapiens (Human)

Source	Prokaryotic expression
Host	E.coli
Endotoxin Level	<1.0EU per 1µg (determined by the LAL method)
Subcellular Location	Membrane
Predicted Molecular Mass	38.1kDa
Accurate Molecular Mass	40kDa(Analysis of differences refer to the manual)
Residues & Tags	Val20~Arg333 with N-terminal His Tag
Buffer Formulation	20mM Tris, 150mM NaCl, pH8.0, containing 1mM EDTA, 1mM DTT, 0.01% SKL, 5% Trehalose and Proclin300.
Traits	Freeze-dried powder
Purity	> 97%
Isoelectric Point	8.0
Applications	Positive Control; Immunogen; SDS-PAGE; WB.

SEQUENCE

```
V  IPAAEEENPAF  WNRQAAEALD  AAKKLQPIQK  
VAKNLILFLG  DGLGVPTVTA  TRILKGQKNG  KLGPETPLAM  DRFPYLALSK  
TYNVDRQVPD  SAATATAYLC  GVKANFQTIG  LSAAARFNQC  NTTRGNEVIS  
VMNRAKQAGK  SVGVVTTTRV  QHASPAGTYA  HTVNRNWYSD  ADMPASARQE  
GCQDIATQLI  SNMDIDVILG  GGRKYMFPNG  TPDPEYPADA  SQNGIRLDGK  
NLVQEWLAKH  QGAWYVWNRT  ELMQASLDQS  VTHLMGLFEP  GDTKYEIHRD  
PTLDPSLMEM  TEAALRLLSR  NPRGFYLFVE  GGR
```

USAGE

Reconstitute in 20mM Tris, 150mM NaCl (pH8.0) to a concentration of 0.1-1.0 mg/mL.
Do not vortex.

STORAGE

Avoid repeated freeze/thaw cycles. Store at 2-8°C for one month. Aliquot and store at -80°C for 12 months.

STABILITY

The thermal stability is described by the loss rate. The loss rate was determined by accelerated thermal degradation test, that is, incubate the protein at 37°C for 48h, and no obvious degradation and precipitation were observed. The loss rate is less than 5% within the expiration date under appropriate storage condition.

Image

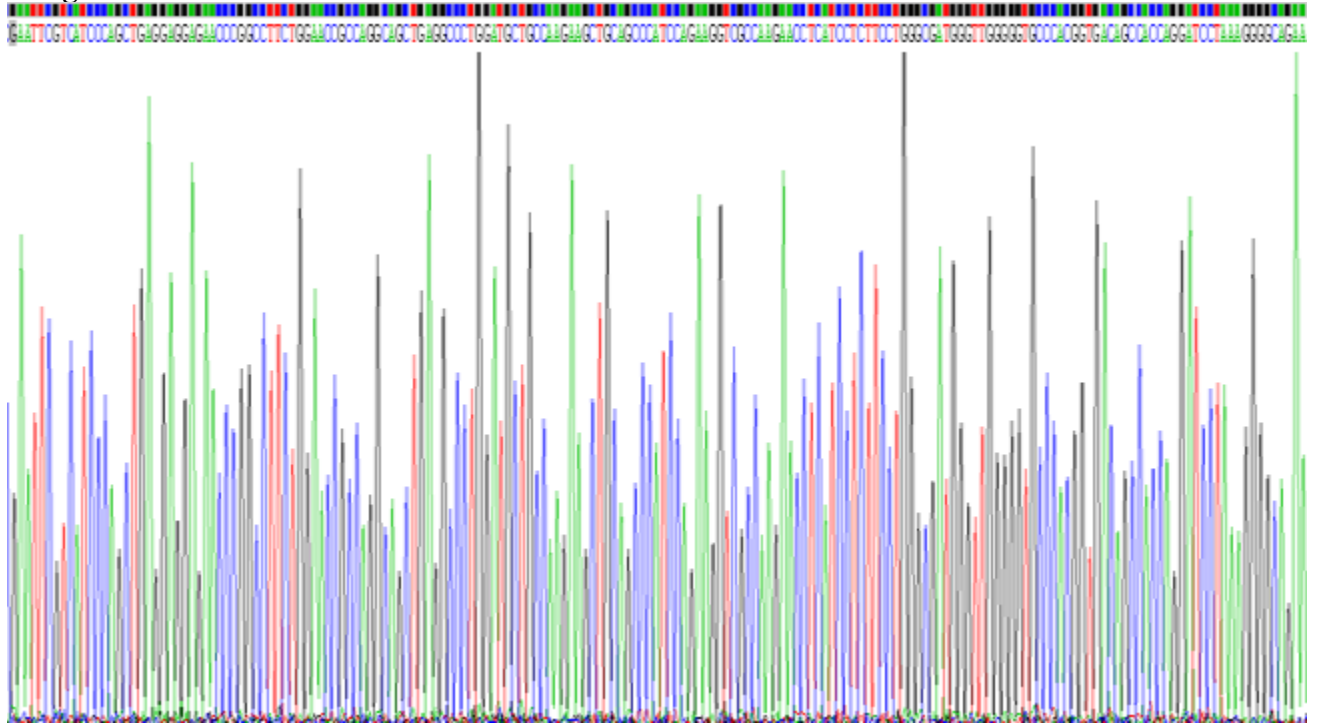


Figure. SDS-PAGE

[IMPORTANT NOTE]

The kit is designed for research use only, we will not be responsible for any issue if the kit was used in clinical diagnostic or any other procedures.