

# Recombinant Pleiotrophin (PTN) Instruction Manual

**SIPB114Hu02**

**Homo sapiens (Human)**

|                                 |                                                                                                                   |
|---------------------------------|-------------------------------------------------------------------------------------------------------------------|
| <b>Source</b>                   | Prokaryotic expression                                                                                            |
| <b>Host</b>                     | E.coli                                                                                                            |
| <b>Endotoxin Level</b>          | <1.0EU per 1µg (determined by the LAL method)                                                                     |
| <b>Subcellular Location</b>     | Secreted                                                                                                          |
| <b>Predicted Molecular Mass</b> | 18.8kDa                                                                                                           |
| <b>Accurate Molecular Mass</b>  | 19kDa(Analysis of differences refer to the manual)                                                                |
| <b>Residues &amp; Tags</b>      | Gly33~Asp168 with N-terminal His Tag                                                                              |
| <b>Buffer Formulation</b>       | 100mMNaHCO <sub>3</sub> , 500mMNaCl, pH8.3, containing 1mM EDTA, 1mM DTT, 0.01% SKL, 5% Trehalose and Proclin300. |
| <b>Traits</b>                   | Freeze-dried powder                                                                                               |
| <b>Purity</b>                   | > 97%                                                                                                             |
| <b>Isoelectric Point</b>        | 9.7                                                                                                               |
| <b>Applications</b>             | Positive Control; Immunogen; SDS-PAGE; WB.                                                                        |

## SEQUENCE

GKKEKPEK KVKKSDCGEW  
QWSVCVPTSG DCGLGTREGT RTGAECKQTM KTQRCKIPCN WKKQFGAECK  
YQFQAWGEC D LNTALKTRTG SLKRALHNAE CQKTVTISKP CGKLTKPKPQ  
AESK K K K K K KEG KKQEKMLD

## USAGE

Reconstitute in ddH<sub>2</sub>O to a concentration of 0.1-1.0 mg/mL. Do not vortex.

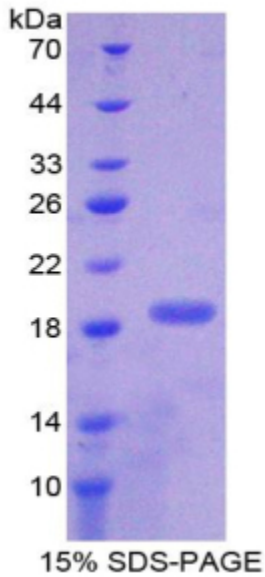
## STORAGE

Avoid repeated freeze/thaw cycles. Store at 2-8°C for one month. Aliquot and store at -80°C for 12 months.

## STABILITY

The thermal stability is described by the loss rate. The loss rate was determined by accelerated thermal degradation test, that is, incubate the protein at 37°C for 48h, and no obvious degradation and precipitation were observed. The loss rate is less than 5% within the expiration date under appropriate storage condition.

### Image



SDS-PAGE Image

### [IMPORTANT NOTE]

The kit is designed for research use only, we will not be responsible for any issue if the kit was used in clinical diagnostic or any other procedures.