

Recombinant Lactate Dehydrogenase A (LDHA) Instruction Manual

SIPB118Mu01

Mus musculus (Mouse)

Source	Prokaryotic expression
Host	E.coli
Endotoxin Level	<1.0EU per 1µg (determined by the LAL method)
Subcellular Location	Secreted
Predicted Molecular Mass	37.8kDa
Accurate Molecular Mass	37kDa(Analysis of differences refer to the manual)
Residues & Tags	Met1~Phe332 with N-terminal His Tag
Buffer Formulation	PBS, pH7.4, containing 0.01% SKL, 5% Trehalose.
Traits	Freeze-dried powder
Purity	> 95%
Isoelectric Point	7.2
Applications	Positive Control; Immunogen; SDS-PAGE; WB.

SEQUENCE

```
MATLKDQLIV NLLKEEQAPQ NKITVVGVA VGMACAISIL MKDLADELAL  
VDVMEDKLGK EMMDLQHGSF FLKTPKIVSS KDYCVTANSK LVIITAGARQ  
QEGESRLNLV QRNVNIFKFI IPNIVKYSPL CKLLIVSNPV DILTYVAWKI  
SGFPKNRVIG SGCNLD SARF RYLMGERLGV HALSCHGWVL GEHGDSSVPV  
WSGVNVAGVS LKSLNPELGT DADKEQWKEV HKQVDSAYE VIKLKGYSW  
AIGLSVADLA ESIMKNLRRV HPISTMIKGL YGINEDVFLS VPCILGQNGI  
SDVVKVTLTP EEEARLKKSA DTLWGIQKEL QF
```

USAGE

Reconstitute in 10mM PBS (pH7.4) to a concentration of 0.1-1.0 mg/mL. Do not vortex.

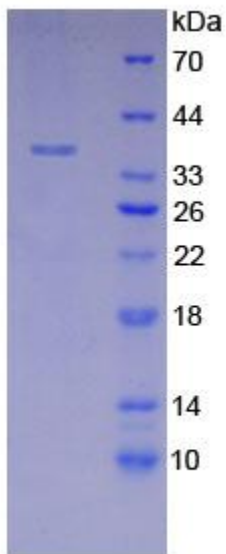
STORAGE

Avoid repeated freeze/thaw cycles. Store at 2-8°C for one month. Aliquot and store at -80°C for 12 months.

STABILITY

The thermal stability is described by the loss rate. The loss rate was determined by accelerated thermal degradation test, that is, incubate the protein at 37°C for 48h, and no obvious degradation and precipitation were observed. The loss rate is less than 5% within the expiration date under appropriate storage condition.

Image



15% SDS-PAGE

SDS-PAGE Image

[IMPORTANT NOTE]

The kit is designed for research use only, we will not be responsible for any issue if the kit was used in clinical diagnostic or any other procedures.