

Recombinant Matrix Metalloproteinase 21 (MMP21) Instruction Manual

SIPB197Hu01

Homo sapiens (Human)

Source	Prokaryotic expression
Host	E.coli
Endotoxin Level	<1.0EU per 1µg (determined by the LAL method)
Subcellular Location	Secreted
Predicted Molecular Mass	29.5KDa
Accurate Molecular Mass	28kDa(Analysis of differences refer to the manual)
Residues & Tags	Thr335~Phe547 with N-terminal His Tag
Buffer Formulation	20mM Tris, 150mM NaCl, pH8.0, containing 1mM EDTA, 1mM DTT, 0.01% SKL, 5% Trehalose and Proclin300.
Traits	Freeze-dried powder
Purity	> 90%
Isoelectric Point	9.5
Applications	Positive Control; Immunogen; SDS-PAGE; WB.

SEQUENCE

```
                                TAFDWI RKERNQYGEV  
MVRFSTYFFR NSWYWLYENR NNRTRYGDPI QILTGWPGIP THNIDAFVHI  
WTWKRDERYF FQGNQYWRYD SDKDQALTED EQGKSYPKLI SEGFPGIPSP  
LDTAFYDRRQ KLIYFFKESL VFAFDVNRNR VLNSYPKRIT EVFPAVIPQN  
HPFRNIDSAY YSYAYNSIFF FKGNAVWKVV NDKDKQQNSW LPANGLF
```

USAGE

Reconstitute in ddH₂O to a concentration of 0.1-0.125 mg/mL. Do not vortex.

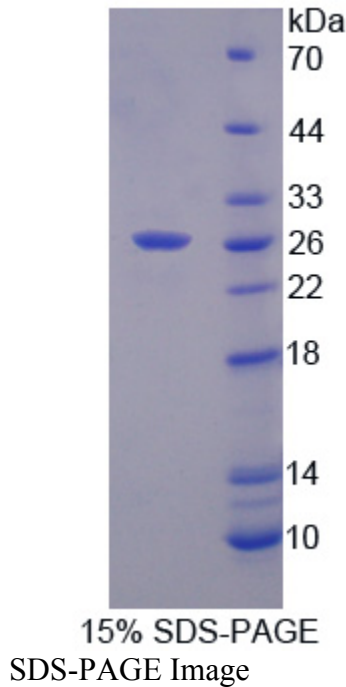
STORAGE

Avoid repeated freeze/thaw cycles. Store at 2-8°C for one month. Aliquot and store at -80°C for 12 months.

STABILITY

The thermal stability is described by the loss rate. The loss rate was determined by accelerated thermal degradation test, that is, incubate the protein at 37°C for 48h, and no obvious degradation and precipitation were observed. The loss rate is less than 5% within the expiration date under appropriate storage condition.

Image



[IMPORTANT NOTE]

The kit is designed for research use only, we will not be responsible for any issue if the kit was used in clinical diagnostic or any other procedures.