

Recombinant Lipopolysaccharide Binding Protein (LBP) Instruction Manual

SIPB228Hu01

Homo sapiens (Human)

Source	Prokaryotic expression
Host	E.coli
Endotoxin Level	<1.0EU per 1µg (determined by the LAL method)
Subcellular Location	Secreted
Predicted Molecular Mass	52.4kDa
Accurate Molecular Mass	52kDa(Analysis of differences refer to the manual)
Residues & Tags	Asn27~Val481 with N-terminal His Tag
Buffer Formulation	PBS, pH7.4, containing 0.01% SKL, 5% Trehalose.
Traits	Freeze-dried powder
Purity	> 95%
Isoelectric Point	6.4
Applications	Positive Control; Immunogen; SDS-PAGE; WB.

SEQUENCE

```
NPGL VARITDKGLQ YAAQEGLLAL
QSELLRITLP DFTGDLRIPH VGRGRYEFHS LNIHSCCELLH SALRPVPGQG
LSLSISDSSI RVQGRWKVRK SFFKLQGSFD VSVKGISISV NLLLGSESSG
RPTVTASSCS SDIADVEVDM SGDLGWLLNL FHNQIESKFQ KVLESRICEM
IQKSVSSDLQ PYLQTLPVTT EIDSFADIDY SLVEAPRATA QMLEVMFKGE
IFHRNHRSPV TLLAAVMSLP EEHNKMVYFA ISDYVFNTAS LUYHEEGYLN
FSITDDMIPP DSNIRLTTKS FRPFVPRLAR LYPNMNLELQ GSVPSAPLLN
FSPGNLSVDP YMEIDAFVLL PSSSKEPVFR LSVATNVSAT LTFNTSKITG
FLKPGKVKVE LKESKVGFLN AELLEALLNY YILNTFYPKF NDKLAEGFPL
PLLKRVQLYD LGLQIHKDFL FLGANVQYMR V
```

USAGE

Reconstitute in 10mM PBS (pH7.4) to a concentration of 0.1-1.0 mg/mL. Do not vortex.

STORAGE

Avoid repeated freeze/thaw cycles. Store at 2-8°C for one month. Aliquot and store at -80°C for 12 months.

STABILITY

The thermal stability is described by the loss rate. The loss rate was determined by accelerated thermal degradation test, that is, incubate the protein at 37°C for 48h, and no obvious degradation and precipitation were observed. The loss rate is less than 5% within the expiration date under appropriate storage condition.

Image

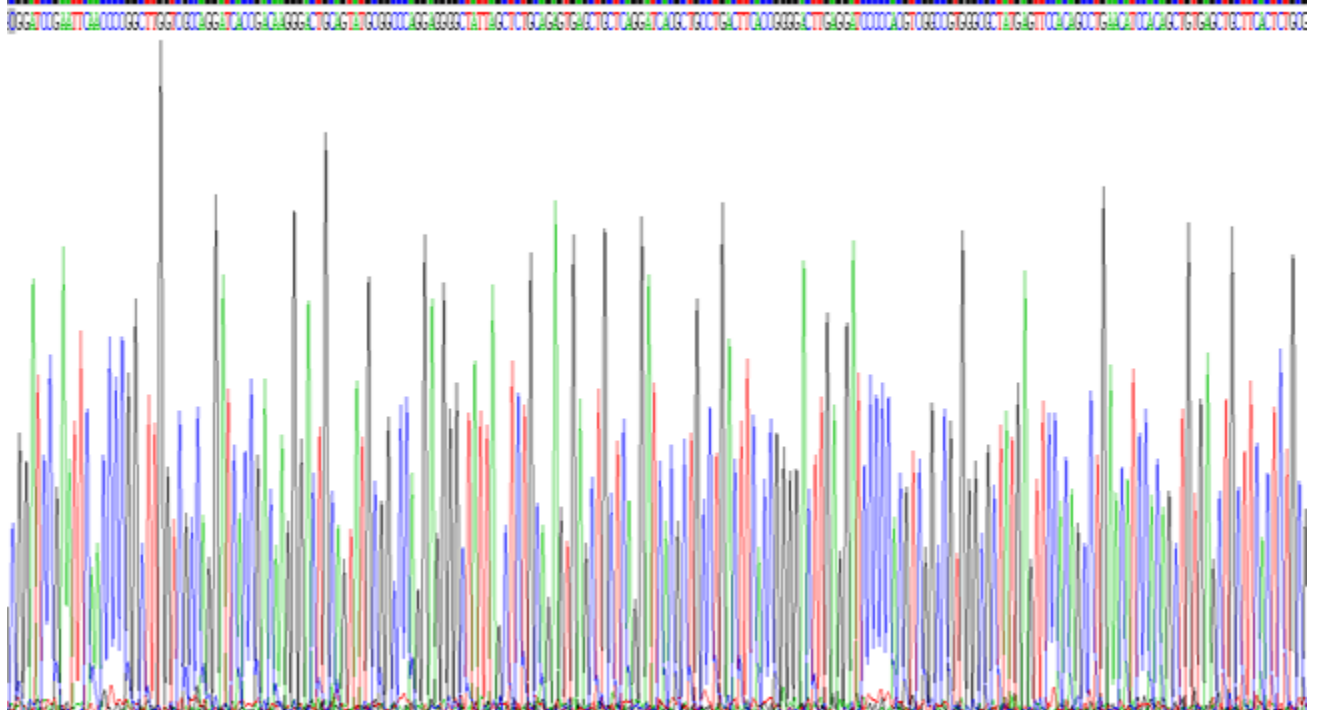


Figure. SDS-PAGE

[IMPORTANT NOTE]

The kit is designed for research use only, we will not be responsible for any issue if the kit was used in clinical diagnostic or any other procedures.