

Recombinant Lipopolysaccharide Binding Protein (LBP) Instruction Manual

SIPB228Po01

Sus scrofa; Porcine (Pig)

Source	Prokaryotic expression
Host	E.coli
Endotoxin Level	<1.0EU per 1µg (determined by the LAL method)
Subcellular Location	Extracellular matrix
Predicted Molecular Mass	56.5kDa
Accurate Molecular Mass	57kDa(Analysis of differences refer to the manual)
Residues & Tags	Asn36~Thr474 with N-terminal His Tag
Buffer Formulation	PBS, pH7.4, containing 0.01% SKL, 1mM DTT, 5% Trehalose and Proclin300.
Traits	Freeze-dried powder
Purity	> 97%
Isoelectric Point	6.0
Applications	Positive Control; Immunogen; SDS-PAGE; WB.

SEQUENCE

NKGLE YVAREGVATL
QSKLHEVTLP DFNGDFKIKY MGRGHYEFHS LDIHSCCELLG STLTPLPGQG
LYLAISDSSI RVK GKWKVRK GILKLDGSFD VKVKGITISV NLLLGSGSSG
RPTVAVSSCS SHIDDVETHM SGLSWLLNL FHNQIESRFR RTLESKICEE
IQDLVASDLQ PYLQTVPVTT EIDNLAGIDY SLVEAPRATA QMLDVMIKGE
IFSLDHRSPV GFLAPVMRLP EEHSRMVYFA VSDYVFKTAS LUYNEAGFLN
FSITDDLVP TSNIRLTTNS FRTFVPRLAR LYPNMNLELW GAMVXPXLN
FGSGNLSSTP QIEVEGFVLL PNSVREP VFR LGMATNVSAA LTFNTSKITG
FLKPGKIQVE LKESKVGIFN VELLEALLNY YLLNNLYPKV NDKLAEGFPL
PLLNYIQLHD PVLQIHKDFL LLGT

USAGE

Reconstitute in 10mM PBS (pH7.4) to a concentration of 0.1-1.0 mg/mL. Do not vortex.

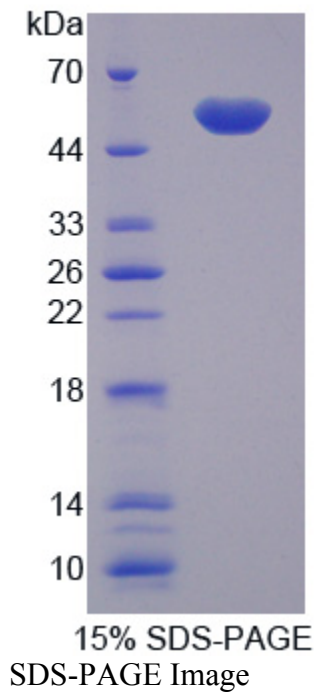
STORAGE

Avoid repeated freeze/thaw cycles. Store at 2-8°C for one month. Aliquot and store at -80°C for 12 months.

STABILITY

The thermal stability is described by the loss rate. The loss rate was determined by accelerated thermal degradation test, that is, incubate the protein at 37°C for 48h, and no obvious degradation and precipitation were observed. The loss rate is less than 5% within the expiration date under appropriate storage condition.

Image



[IMPORTANT NOTE]

The kit is designed for research use only, we will not be responsible for any issue if the kit was used in clinical diagnostic or any other procedures.

