

Recombinant Lipopolysaccharide Binding Protein (LBP) Instruction Manual

SIPB228Po02

Sus scrofa; Porcine (Pig)

Source	Prokaryotic expression
Host	E.coli
Endotoxin Level	<1.0EU per 1µg (determined by the LAL method)
Subcellular Location	Secreted
Predicted Molecular Mass	73.2kDa
Accurate Molecular Mass	72kDa(Analysis of differences refer to the manual)
Residues & Tags	Asn36~Thr474 with His and TRxA Tag
Buffer Formulation	PBS, pH7.4, containing 0.01% SKL, 5% Trehalose.
Traits	Freeze-dried powder
Purity	> 90%
Isoelectric Point	6.0
Applications	Positive Control; Immunogen; SDS-PAGE; WB.

SEQUENCE

```
                                NKGLE YVAREGVATL
QSKLHEVTLP DFNGDFKIKY MGRGHYEFHS LDIHSCCELLG STLTPLPGQG
LYLAISDSSI RVKGGKWKVRK GILKLDGSFD VKVKGITISV NLLLGSGSSG
RPTVAVSSCS SHIDDVETHM SGDLWLLNL FHNQIESRFR RTLESKICEE
IQDLVASDLQ PYLQTVPVTT EIDNLAGIDY SLVEAPRATA QMLDVMIKGE
IFSLDHRSPV GFLAPVMRLP EEHSRMVYFA VSDYVFKTAS LUYNEAGFLN
FSITDDLPPP TSNIRLTTNS FRTFVPRLAR LYPNMNLELW GAMVSPXPLN
FGSGNLSSTP QIEVEGFVLL PNSVREPVFR LGMATNVSAA LTFNTSKITG
FLKPGKIQVE LKESKVGIFN VELLEALLNY YLLNNLYPKV NDKLAEGFPL
PLLNYIQLHD PVLQIHKDFL LLGT
```

USAGE

Reconstitute in 10mM PBS (pH7.4) to a concentration of 0.1-1.0 mg/mL. Do not vortex.

STORAGE

Avoid repeated freeze/thaw cycles. Store at 2-8°C for one month. Aliquot and store at -80°C for 12 months.

STABILITY

The thermal stability is described by the loss rate. The loss rate was determined by accelerated thermal degradation test, that is, incubate the protein at 37°C for 48h, and no obvious degradation and precipitation were observed. The loss rate is less than 5% within the expiration date under appropriate storage condition.

Image

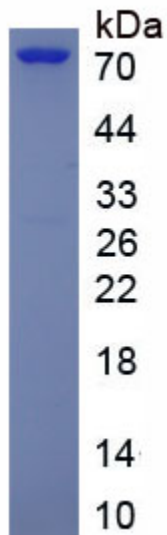


Figure. SDS-PAGE

[IMPORTANT NOTE]

The kit is designed for research use only, we will not be responsible for any issue if the kit was used in clinical diagnostic or any other procedures.