

Recombinant Interleukin 6 Receptor (IL6R) Instruction Manual

SIPB272Ra02

Rattus norvegicus (Rat)

Source	Prokaryotic expression
Host	E.coli
Endotoxin Level	<1.0EU per 1µg (determined by the LAL method)
Subcellular Location	Membrane
Predicted Molecular Mass	37.4kDa
Accurate Molecular Mass	40kDa(Analysis of differences refer to the manual)
Residues & Tags	Ala19~Ala348 with N-terminal His Tag
Buffer Formulation	PBS, pH7.4, containing 0.01% SKL, 5% Trehalose.
Traits	Freeze-dried powder
Purity	> 97%
Isoelectric Point	6.1
Applications	Positive Control; Immunogen; SDS-PAGE; WB.

SEQUENCE

```
AL VLGSCRALEV ANGTVTSLPG ATVTLICPGK  
EAAGNATIHV VYSGSQSREW TTTGNTLVLR AVQVNDTGHY LCFLDDHLVG  
TVPLLVDVPP EEPKLSFRK NPLVNAFCEW HPSSTPSPTT KAVMFAKKIN  
TTNGKSDFQV PCQYSQQLKS FSCEVEILEG DKVYHIVSLC VANSVGSRSS  
HNVVFQSLKM VQPDPPANLV VSAIPGXPRW LKVSQDPES WDPSYLLQF  
ELRYPVWSK XFTVWPLQVA QHQCVIHDAL RGVKHVVQVR GKEEFDIGQW  
SKWSPEVTGT PWLAEPRTTP AGIPGNPTQV SVEDYDNHED QYGSSTEA
```

USAGE

Reconstitute in ddH₂O to a concentration of 0.1-0.5 mg/mL. Do not vortex.

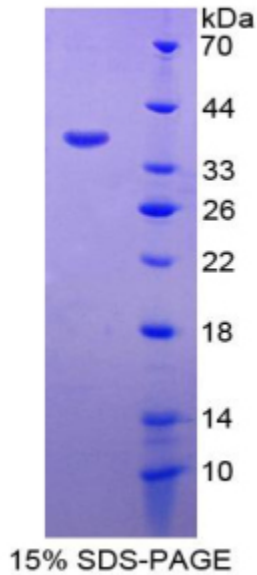
STORAGE

Avoid repeated freeze/thaw cycles. Store at 2-8°C for one month. Aliquot and store at -80°C for 12 months.

STABILITY

The thermal stability is described by the loss rate. The loss rate was determined by accelerated thermal degradation test, that is, incubate the protein at 37°C for 48h, and no obvious degradation and precipitation were observed. The loss rate is less than 5% within the expiration date under appropriate storage condition.

Image



SDS-PAGE Image

[IMPORTANT NOTE]

The kit is designed for research use only, we will not be responsible for any issue if the kit was used in clinical diagnostic or any other procedures.