

Recombinant Interleukin 6 Receptor (IL6R) Instruction Manual

SIPB272Ra03

Rattus norvegicus (Rat)

Source	Prokaryotic expression
Host	E.coli
Endotoxin Level	<1.0EU per 1µg (determined by the LAL method)
Subcellular Location	Secreted, extracellular space, extracellular matrix, basement membrane.
Predicted Molecular Mass	17.0kDa
Accurate Molecular Mass	18kDa(Analysis of differences refer to the manual)
Residues & Tags	Asp214~Ala348 ((Accession # P22273) with
Buffer Formulation	PBS, pH7.4, containing 0.01% SKL, 1mM DTT, 5% Trehalose and Proclin300.
Traits	Freeze-dried powder
Purity	> 95%
Isoelectric Point	5.7
Applications	Positive Control; Immunogen; SDS-PAGE; WB.

USAGE

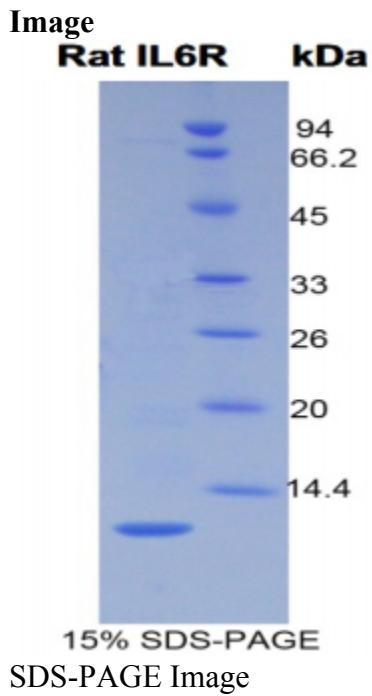
Reconstitute in PBS or others.

STORAGE

Avoid repeated freeze/thaw cycles. Store at 2-8°C for one month. Aliquot and store at -80°C for 12 months.

STABILITY

The thermal stability is described by the loss rate. The loss rate was determined by accelerated thermal degradation test, that is, incubate the protein at 37°C for 48h, and no obvious degradation and precipitation were observed. The loss rate is less than 5% within the expiration date under appropriate storage condition.



[IMPORTANT NOTE]

The kit is designed for research use only, we will not be responsible for any issue if the kit was used in clinical diagnostic or any other procedures.