

# Recombinant Complement Component 8g (C8g) Instruction Manual

## SIPB329Hu01

### Homo sapiens (Human)

|                                 |                                                                         |
|---------------------------------|-------------------------------------------------------------------------|
| <b>Source</b>                   | Prokaryotic expression                                                  |
| <b>Host</b>                     | E.coli                                                                  |
| <b>Endotoxin Level</b>          | <1.0EU per 1 $\mu$ g (determined by the LAL method)                     |
| <b>Subcellular Location</b>     | n/a                                                                     |
| <b>Predicted Molecular Mass</b> | 48.3kDa                                                                 |
| <b>Accurate Molecular Mass</b>  | 48kDa(Analysis of differences refer to the manual)                      |
| <b>Residues &amp; Tags</b>      | Lys39~Arg202 with N-terminal His and GST Tag                            |
| <b>Buffer Formulation</b>       | PBS, pH7.4, containing 0.01% SKL, 1mM DTT, 5% Trehalose and Proclin300. |
| <b>Traits</b>                   | Freeze-dried powder                                                     |
| <b>Purity</b>                   | > 95%                                                                   |
| <b>Isoelectric Point</b>        | n/a                                                                     |
| <b>Applications</b>             | Positive Control; Immunogen; SDS-PAGE; WB.                              |

### USAGE

Reconstitute in PBS or others.

### STORAGE

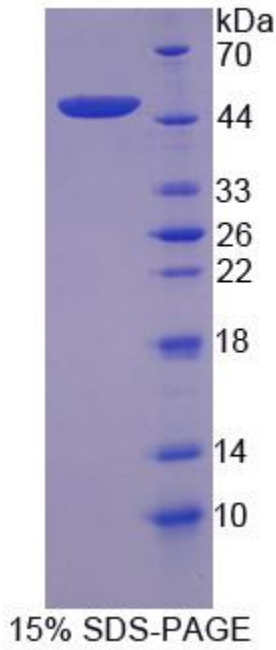
Avoid repeated freeze/thaw cycles. Store at 2-8°C for one month. Aliquot and store at -80°C for 12 months.

### STABILITY

The thermal stability is described by the loss rate. The loss rate was determined by accelerated thermal degradation test, that is, incubate the protein at 37°C for 48h, and no

obvious degradation and precipitation were observed. The loss rate is less than 5% within the expiration date under appropriate storage condition.

**Image**



SDS-PAGE Image

**[IMPORTANT NOTE]**

The kit is designed for research use only, we will not be responsible for any issue if the kit was used in clinical diagnostic or any other procedures.