

Recombinant Mitogen Activated Protein Kinase Kinase 6 (MAP2K6) Instruction Manual

SIPB456Hu01

Homo sapiens (Human)

Source	Prokaryotic expression
Host	E.coli
Endotoxin Level	<1.0EU per 1µg (determined by the LAL method)
Subcellular Location	Nucleus, Cytoplasm
Predicted Molecular Mass	33.1kDa
Accurate Molecular Mass	36kDa(Analysis of differences refer to the manual)
Residues & Tags	Phe46~Pro306 with N-terminal His Tag
Buffer Formulation	100mMNaHCO ₃ , 500mMNaCl, pH8.3, containing 1mM EDTA, 1mM DTT, 0.01% SKL, 5% Trehalose and Proclin300.
Traits	Freeze-dried powder
Purity	> 90%
Isoelectric Point	7.2
Applications	Positive Control; Immunogen; SDS-PAGE; WB.

SEQUENCE

DDLEPIMELG RGAYGVVEKM RHVPSGQIMA VKRIRATVNS QEQKRLMLDL
DISMRTVDCP FTVTFYGALF REGDVVICME LMDTSLDKFY KQVIDKGQTI
PEDILGKIAV SIVKALEHLH SKLSVIHRDV KPSNVLINAL GQVKMCDFGI
SGYLVDSVAK TIDAGCKPYM APERINPELN QKGYSVKSDI WSLGITMIEL
AILRFPYDSW GTPFQQLKQV VEEPSPQLPA DKFSAEFVDF TSQCLKNSK
ERPTYP

USAGE

Reconstitute in ddH₂O to a concentration of 0.1-1.0 mg/mL. Do not vortex.

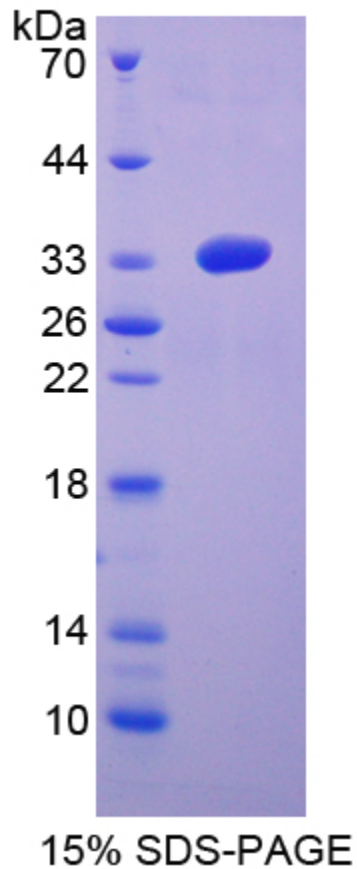
STORAGE

Avoid repeated freeze/thaw cycles. Store at 2-8°C for one month. Aliquot and store at -80°C for 12 months.

STABILITY

The thermal stability is described by the loss rate. The loss rate was determined by accelerated thermal degradation test, that is, incubate the protein at 37°C for 48h, and no obvious degradation and precipitation were observed. The loss rate is less than 5% within the expiration date under appropriate storage condition.

Image



SDS-PAGE Image

[IMPORTANT NOTE]

The kit is designed for research use only, we will not be responsible for any issue if the kit was used in clinical diagnostic or any other procedures.