

# Recombinant 5-Lipoxygenase (5-LO) Instruction Manual

**SIPB673Hu02**

**Homo sapiens (Human)**

<b>Source</b>	Prokaryotic expression
<b>Host</b>	E.coli
<b>Endotoxin Level</b>	<1.0EU per 1µg (determined by the LAL method)
<b>Subcellular Location</b>	Membrane, Nucleus, Cytoplasm
<b>Predicted Molecular Mass</b>	81.7kDa
<b>Accurate Molecular Mass</b>	82kDa(Analysis of differences refer to the manual)
<b>Residues &amp; Tags</b>	Met1~Ile674 with N-terminal His Tag
<b>Buffer Formulation</b>	20mM Tris, 150mM NaCl, pH8.0, containing 1mM EDTA, 1mM DTT, 0.01% SKL, 5% Trehalose and Proclin300.
<b>Traits</b>	Freeze-dried powder
<b>Purity</b>	> 90%
<b>Isoelectric Point</b>	5.5
<b>Applications</b>	Positive Control; Immunogen; SDS-PAGE; WB.

## SEQUENCE

```
MPSYTVTVAT GSQWFGTDD YIYLSLVGSA GCSEKHLDDK PFYNDFERGA
VDSYDVTVDE ELGEIQLVRI EKRKYWLNDG WYLKYITLKT PHGDYIEFPC
YRWITGDVEV VLRDGRAKLA RDDQIHILKQ HRRKELETRQ KQYRWMWNP
GFPLSIDAKC HKDLPRDIQF DSEKGVDFVL NYSKAMENLF INRFMHMFQS
SWNDFADFEK IFVKISNTIS ERVMNHQED LMGYQFLNG CNPVLIRRCT
ELPEKLPVTT EMVECSLERQ LSLEQEVQQG NIFIVDFELL DGIDANKTDP
CTLQFLAAPI CLLYKNLANK IVPIAIQLNQ IPGDENPIFL PSDAKYDWLL
AKIWRSSDF HVHQITITHLL RTHLVSEVFG IAMYRQLPAV HPIFKLLVAH
VRFTIAINTK AREQLICECG LFDKANATGG GGHVQMVQRA MKDLTYASLC
FPEAIKARGM ESKEDIPYYF YRDDGLLVWE AIRTFTAQEVV DIYYEGDQVV
EEDPELQDFV NDVYVYGMRG RKSSGFPKSV KSREQLSEYL TVVIFTASQA
HAAVNFQGYD WCSWIPNAPP TMRAPPPTAK GVVTIEQIVD TLPDRGRSCW
HLGAVWALSQ FQENELFLGM YPEEHFIEKP VKEAMARFRK NLEAIVSVIA
ERNKKKQLPY YYLSPDRIPN SVAI
```

## USAGE

Reconstitute in ddH<sub>2</sub>O to a concentration of 0.1-1.0 mg/mL. Do not vortex.

## **STORAGE**

Avoid repeated freeze/thaw cycles. Store at 2-8°C for one month. Aliquot and store at -80°C for 12 months.

## **STABILITY**

The thermal stability is described by the loss rate. The loss rate was determined by accelerated thermal degradation test, that is, incubate the protein at 37°C for 48h, and no obvious degradation and precipitation were observed. The loss rate is less than 5% within the expiration date under appropriate storage condition.

## **Image**

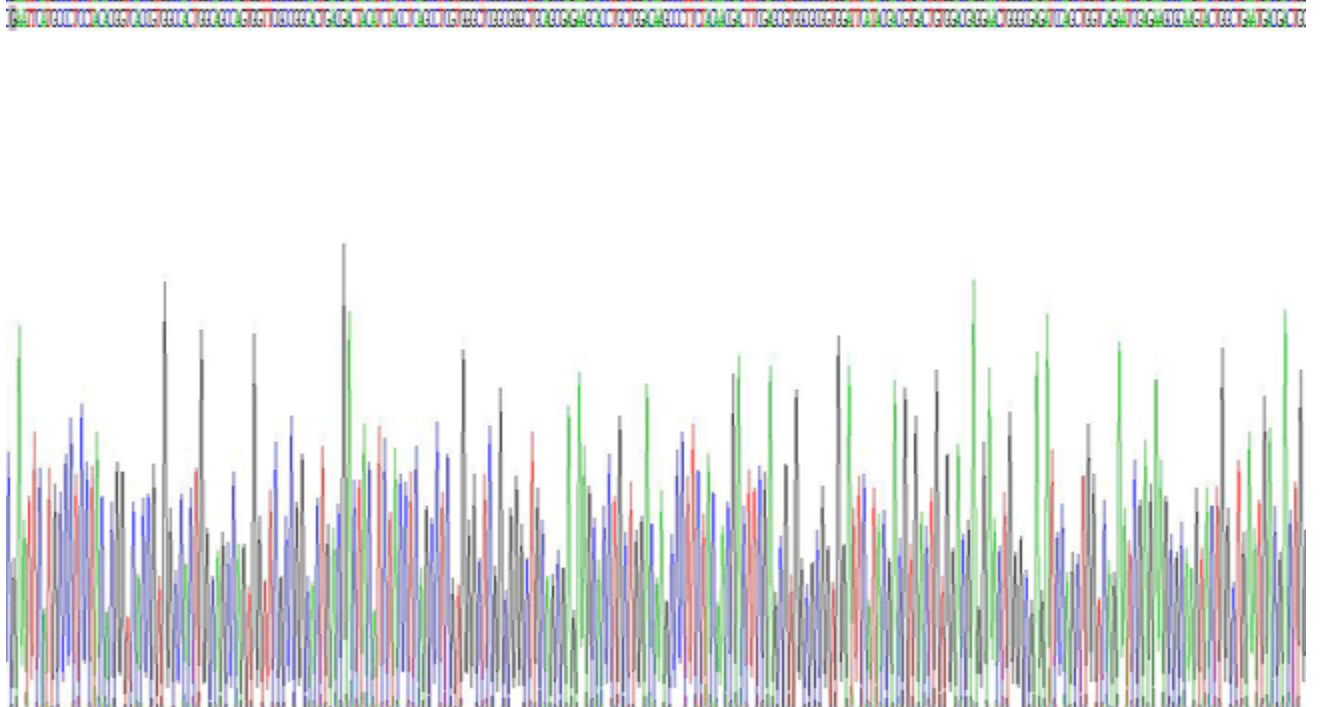


Figure. SDS-PAGE

## **[IMPORTANT NOTE]**

The kit is designed for research use only, we will not be responsible for any issue if the kit was used in clinical diagnostic or any other procedures.