

Recombinant Kruppel Like Factor 4, Gut (KLF4) Instruction Manual

SIPB713Hu01

Homo sapiens (Human)

Source	Prokaryotic expression
Host	E.coli
Endotoxin Level	<1.0EU per 1µg (determined by the LAL method)
Subcellular Location	Nucleus
Predicted Molecular Mass	35.2kDa
Accurate Molecular Mass	38kDa(Analysis of differences refer to the manual)
Residues & Tags	Leu187~His474 with N-terminal His Tag
Buffer Formulation	20mM Tris, 150mM NaCl, pH8.0, containing 1mM EDTA, 1mM DTT, 0.01% SKL, 5% Trehalose and Proclin300.
Traits	Freeze-dried powder
Purity	> 90%
Isoelectric Point	9.2
Applications	Positive Control; Immunogen; SDS-PAGE; WB.

SEQUENCE

```
                                LADI NDVSPSGGFV
AELLRPELDP VYIPPQQPQP PGGGLMGKFV LKASLSAPGS EYGSPSVISV
SKGSPDGSHP VVVAPYNGGP PRTCPKIKQE AVSSCTHLGA GPPLSNGHRP
AAHDFPLGRQ LPSRTTPTLG LEEVLSSRDC HPALPLPPGF HPHPGPNYPS
FLPDQMPPQV PPLHYQELMP PGSCMPEEPK PKRGRRSWPR KRTATHTCDY
AGCGKTYTKS SHLKAHLRTH TGEKPYHCDW DGCGWKFARS DELTRHYRKH
TGHRPFQCQK CDRAFSRSDH LALH
```

USAGE

Reconstitute in 20mM Tris, 150mM NaCl (pH8.0) to a concentration of 0.1-1.0 mg/mL.
Do not vortex.

STORAGE

Avoid repeated freeze/thaw cycles. Store at 2-8°C for one month. Aliquot and store at -80°C for 12 months.

STABILITY

The thermal stability is described by the loss rate. The loss rate was determined by accelerated thermal degradation test, that is, incubate the protein at 37°C for 48h, and no obvious degradation and precipitation were observed. The loss rate is less than 5% within the expiration date under appropriate storage condition.

Image

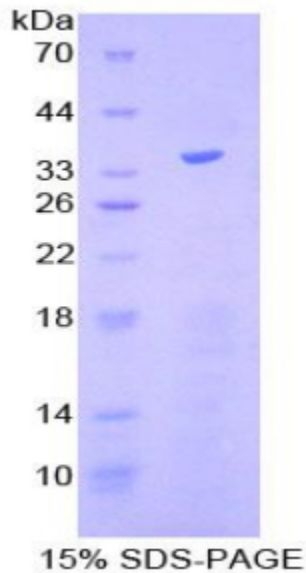


Figure. SDS-PAGE

[IMPORTANT NOTE]

The kit is designed for research use only, we will not be responsible for any issue if the kit was used in clinical diagnostic or any other procedures.