

Recombinant Procollagen C- Endopeptidase Enhancer (PCOLCE) Instruction Manual

SIPB734Hu02

Homo sapiens (Human)

Source	Prokaryotic expression
Host	E.coli
Endotoxin Level	<1.0EU per 1µg (determined by the LAL method)
Subcellular Location	Secreted
Predicted Molecular Mass	47.8kDa
Accurate Molecular Mass	48kDa(Analysis of differences refer to the manual)
Residues & Tags	Gly38~Asp449 with N-terminal His Tag
Buffer Formulation	20mM Tris, 150mM NaCl, pH8.0, containing 1mM EDTA, 1mM DTT, 0.01% SKL, 5% Trehalose and Proclin300.
Traits	Freeze-dried powder
Purity	> 95%
Isoelectric Point	7.5
Applications	Positive Control; Immunogen; SDS-PAGE; WB.

SEQUENCE

```
GGD VKGESGYVAS  
EGFPNLYPPN KECIWTITVP EGQTVSLSFR VFDLELHPAC RYDALEVFAG  
SGTSGQRLGR FCGTFRPAPL VAPGNQVTLR MTTDEGTGGR GFLLWYSGRA  
TSGTEHQFCG GRLEKAQGTI TTPNWPESDY PPGISCSWHI IAPPDQVIAL  
TFEKFDLEPD TYCRYDSVSV FNGAVSDDSR RLGKFCGDAV PGSISSEGNE  
LLVQFVSDLS VTADGFSASY KTLPRGTAKE GQGPGRKRG EPKVKLPPKS  
QPPEKTEESP SAPDAPTCPK QCRRTGTLQS NFCASSLVVT ATVKSMVREP  
GGLAVTVSL IGAYKTGGLD LPSPTGASL KFYVPCKQCP PMKKGVSYLL  
MGQVEENRGP VLPPESFVVL HRPNQDQILT NLSKRKCPQSQ PVRAAASQD
```

USAGE

Reconstitute in 20mM Tris, 150mM NaCl (pH8.0) to a concentration of 0.1-1.0 mg/mL.
Do not vortex.

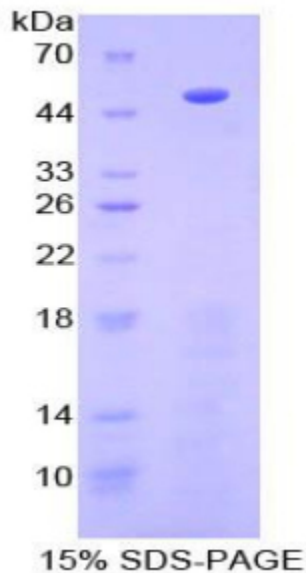
STORAGE

Avoid repeated freeze/thaw cycles. Store at 2-8°C for one month. Aliquot and store at -80°C for 12 months.

STABILITY

The thermal stability is described by the loss rate. The loss rate was determined by accelerated thermal degradation test, that is, incubate the protein at 37°C for 48h, and no obvious degradation and precipitation were observed. The loss rate is less than 5% within the expiration date under appropriate storage condition.

Image



SDS-PAGE Image

[IMPORTANT NOTE]

The kit is designed for research use only, we will not be responsible for any issue if the kit was used in clinical diagnostic or any other procedures.