

# Recombinant Enolase 1 (ENO1) Instruction Manual

**SIPB782Hu02**

**Homo sapiens (Human)**

<b>Source</b>	Prokaryotic expression
<b>Host</b>	E.coli
<b>Endotoxin Level</b>	<1.0EU per 1µg (determined by the LAL method)
<b>Subcellular Location</b>	Membrane, Nucleus, Cytoplasm, Chromosome
<b>Predicted Molecular Mass</b>	51.0kDa
<b>Accurate Molecular Mass</b>	51kDa(Analysis of differences refer to the manual)
<b>Residues &amp; Tags</b>	Met1~Lys434 with N-terminal His Tag
<b>Buffer Formulation</b>	20mM Tris, 150mM NaCl, pH8.0, containing 0.01% SKL, 5% Trehalose.
<b>Traits</b>	Freeze-dried powder
<b>Purity</b>	> 95%
<b>Isoelectric Point</b>	7.7
<b>Applications</b>	Positive Control; Immunogen; SDS-PAGE; WB.

## SEQUENCE

```
MSILKIHARE IFDSRGNPTV EVDLFTSKGL FRAAVPSGAS TGIYEALRLR  
DNDKTRYMGK GVSKAHEHIN KTIAPALVSK KLVNTEQEKI DKLMIEMDGT  
ENKSKFGANA ILGVSLAVCK AGAVEKGVPL YRHIADLAGN SEVILPVPAF  
NVINGGSHAG NKLAMQEFMI LPVGAANFRE AMRIGAEVYH NLKNVIKEKY  
GKDATNVGDE GGFAPNILEN KEGLELLKTA IGKAGYTDKV VIGMDVAASE  
FFRSGKYDLD FKSPDDPSRY ISPDQLADLY KSFIDYPPV SIEDPFDQDD  
WGAWQFTAS AGIQVVGDDL TVTNPKRIAK AVNEKSCNCL LLKVNQIGSV  
TESLQACKLA QANGWGMVS HRSGETEDTF IADLVVGLCT GQIKTGAPCR  
SERLAKYNQL LRIIEELGSK AKFAGRNFRN PLAK
```

## USAGE

Reconstitute in ddH<sub>2</sub>O to a concentration of 0.1-1.0 mg/mL. Do not vortex.

## STORAGE

Avoid repeated freeze/thaw cycles. Store at 2-8°C for one month. Aliquot and store at -80°C for 12 months.

## STABILITY

The thermal stability is described by the loss rate. The loss rate was determined by accelerated thermal degradation test, that is, incubate the protein at 37°C for 48h, and no obvious degradation and precipitation were observed. The loss rate is less than 5% within the expiration date under appropriate storage condition.

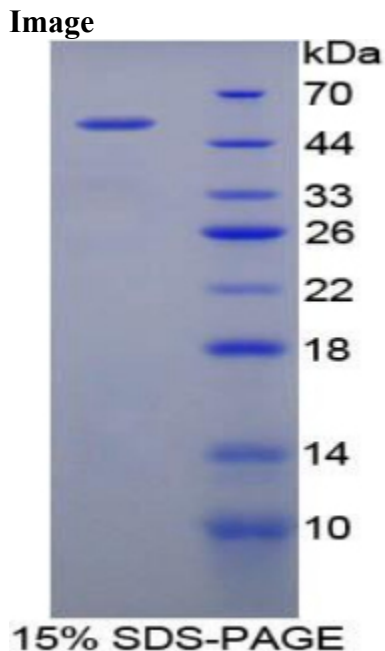


Figure. SDS-PAGE

## **[IMPORTANT NOTE]**

The kit is designed for research use only, we will not be responsible for any issue if the kit was used in clinical diagnostic or any other procedures.