

Recombinant Dystrophin (DMD) Instruction Manual

SIPB800Hu01

Homo sapiens (Human)

Source	Prokaryotic expression
Host	E.coli
Endotoxin Level	<1.0EU per 1µg (determined by the LAL method)
Subcellular Location	Membrane, Cytoplasm
Predicted Molecular Mass	33.4kDa
Accurate Molecular Mass	34kDa(Analysis of differences refer to the manual)
Residues & Tags	Ala3048~Ser3328 with N-terminal His Tag
Buffer Formulation	20mM Tris, 150mM NaCl, pH8.0, containing 1mM EDTA, 1mM DTT, 0.01% SKL, 5% Trehalose and Proclin300.
Traits	Freeze-dried powder
Purity	> 95%
Isoelectric Point	8.2
Applications	Positive Control; Immunogen; SDS-PAGE; WB.

SEQUENCE

ASQ
HFLSTSVQGP WERAISPNKV PYYINHETQT TCWDHPKMTE LYQSLADLNN
VRFSAYRTAM KLRRQLKALC LDLLSLSAAC DALDQHNLKQ NDQPMILQI
INCLTTIYDR LEQEHNNLVN VPLCVDMLN WLLNVYDTGR TGRIRVLSFK
TGIISLCKAH LEDKYRYLFK QVASSTGFCD QRRLGLLLHD SIQIPRQLGE
VASFGGSNIE PSVRSCFQFA NNKPEIEAAL FLDWMRLEPQ SMWLPVLHR
VAAAEAKHQ AKCNICKECP IIGFRYRS

USAGE

Reconstitute in 20mM Tris, 150mM NaCl (pH8.0) to a concentration of 0.1-1.0 mg/mL.
Do not vortex.

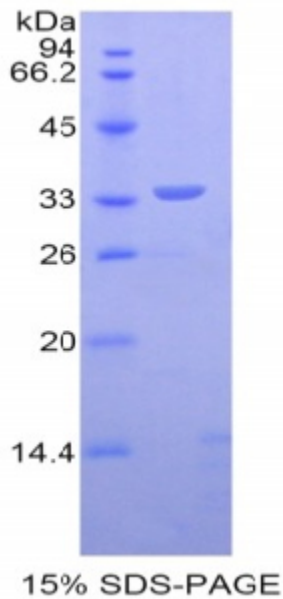
STORAGE

Avoid repeated freeze/thaw cycles. Store at 2-8°C for one month. Aliquot and store at -80°C for 12 months.

STABILITY

The thermal stability is described by the loss rate. The loss rate was determined by accelerated thermal degradation test, that is, incubate the protein at 37°C for 48h, and no obvious degradation and precipitation were observed. The loss rate is less than 5% within the expiration date under appropriate storage condition.

Image



SDS-PAGE Image

[IMPORTANT NOTE]

The kit is designed for research use only, we will not be responsible for any issue if the kit was used in clinical diagnostic or any other procedures.