

Recombinant Cytokeratin 10 (CK10) Instruction Manual

SIPB855Hu01

Homo sapiens (Human)

Source	Prokaryotic expression
Host	E.coli
Endotoxin Level	<1.0EU per 1µg (determined by the LAL method)
Subcellular Location	Secreted
Predicted Molecular Mass	38.9kDa
Accurate Molecular Mass	40kDa(Analysis of differences refer to the manual)
Residues & Tags	Leu153~Glu456 with N-terminal His Tag
Buffer Formulation	PBS, pH7.4, containing 0.01% SKL, 5% Trehalose.
Traits	Freeze-dried powder
Purity	> 97%
Isoelectric Point	4.8
Applications	Positive Control; Immunogen; SDS-PAGE; WB.

SEQUENCE

```
LNDRLASV LDKVRALEES NYELEGKIKE WYEKHGNSHQ GEPRDYSKYY  
KTIDDLKNQI LNLTTDNANI LLQIDNARLA ADDFRLKYEN EVALRQSVEA  
DINGLRRVLD ELTLTKADLE MQIESLTEEL AYLKKNHEEE MKDLRNVSTG  
DVNVEMNAAP GVDLTQLLNN MRSQYEQLAE QNRKDAEAWF NEKSKELTTE  
IDNNIEQISS YKSEITELRR NVQALEIELQ SQLALKQSLE ASLAETEGRY  
CVQLSQIQAQ ISALEEQLQQ IRAETECQNT EYQQLLDIKI RLENEIQTYR  
SLLEGE
```

USAGE

Reconstitute in 10mM PBS (pH7.4) to a concentration of 0.1-1.0 mg/mL. Do not vortex.

STORAGE

Avoid repeated freeze/thaw cycles. Store at 2-8°C for one month. Aliquot and store at -80°C for 12 months.

STABILITY

The thermal stability is described by the loss rate. The loss rate was determined by accelerated thermal degradation test, that is, incubate the protein at 37°C for 48h, and no obvious degradation and precipitation were observed. The loss rate is less than 5% within the expiration date under appropriate storage condition.

Image

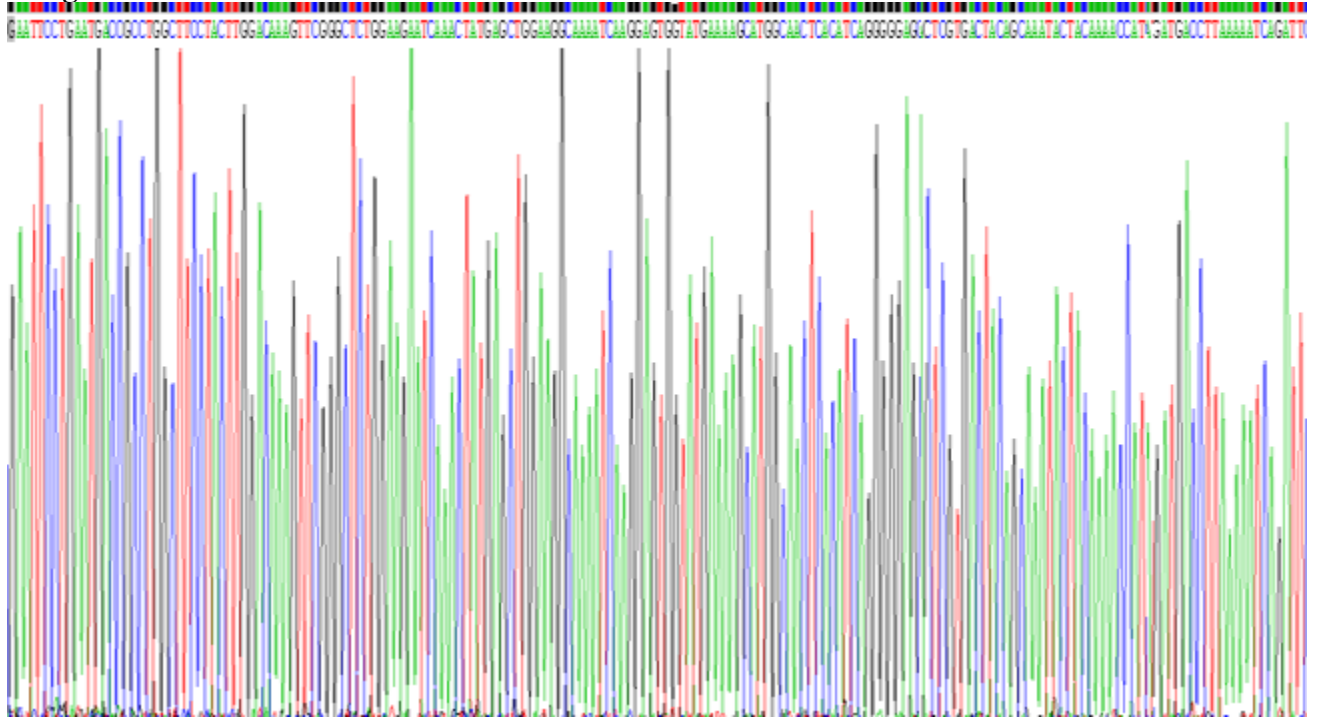


Figure . Gene Sequencing (extract)

Image

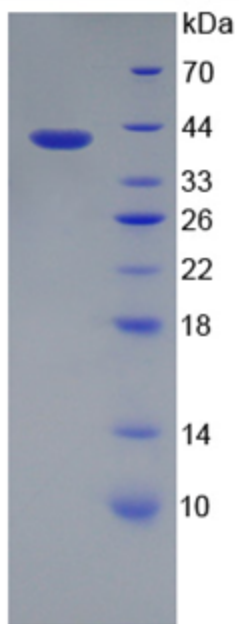


Figure. SDS-PAGE

[IMPORTANT NOTE]

The kit is designed for research use only, we will not be responsible for any issue if the kit was used in clinical diagnostic or any other procedures.