

Recombinant Tau Protein (MAPT) Instruction Manual

SIPB992Ra01

Rattus norvegicus (Rat)

Source	Prokaryotic expression
Host	E.coli
Endotoxin Level	<1.0EU per 1µg (determined by the LAL method)
Subcellular Location	Membrane, Cytoplasm
Predicted Molecular Mass	38.4kDa
Accurate Molecular Mass	48kDa(Analysis of differences refer to the manual)
Residues & Tags	Ala34~Ser368 with N-terminal His Tag
Buffer Formulation	20mM Tris, 150mM NaCl, pH8.0, containing 1mM EDTA, 1mM DTT, 0.01% SKL, 5% Trehalose and Proclin300.
Traits	Freeze-dried powder
Purity	> 95%
Isoelectric Point	9.9
Applications	Positive Control; Immunogen; SDS-PAGE; WB.

SEQUENCE

```

                                     AEEAGIG DTPNMEDQAA
GHVTQARVAG VSKDRTGNDE KKAKGADGKT GAKIATPRGA ATPGQKGTSN
ATRIPAKTTP SPKTPPGSGE PPKSGERSGY SSPGSPGTPG SRSRTPSLPT
PPTREPKKVA VVRTPPKSPS ASKSRLQTAP VPMPDLKNVR SKIGSTENLK
HQPGGGKVQI INKKLDLSNV QSKCGSKDNI KHVPGGGSVH IVYKPDLSK
VTSKCGSLGN IHHKPGGGQV EVKSEKLDLK DRVQSKIGSL DNITHVPGGG
NKKIETHKLT FRENAKAKTD HGAEIVYKSP VVSGDTSRPH LSNVSSTGSI
DMVDSPQLAT LADEVAS
```

USAGE

Reconstitute in 20mM Tris, 150mM NaCl (pH8.0) to a concentration of 0.1-1.0 mg/mL.
Do not vortex.

STORAGE

Avoid repeated freeze/thaw cycles. Store at 2-8°C for one month. Aliquot and store at -80°C for 12 months.

STABILITY

The thermal stability is described by the loss rate. The loss rate was determined by accelerated thermal degradation test, that is, incubate the protein at 37°C for 48h, and no obvious degradation and precipitation were observed. The loss rate is less than 5% within the expiration date under appropriate storage condition.

Image

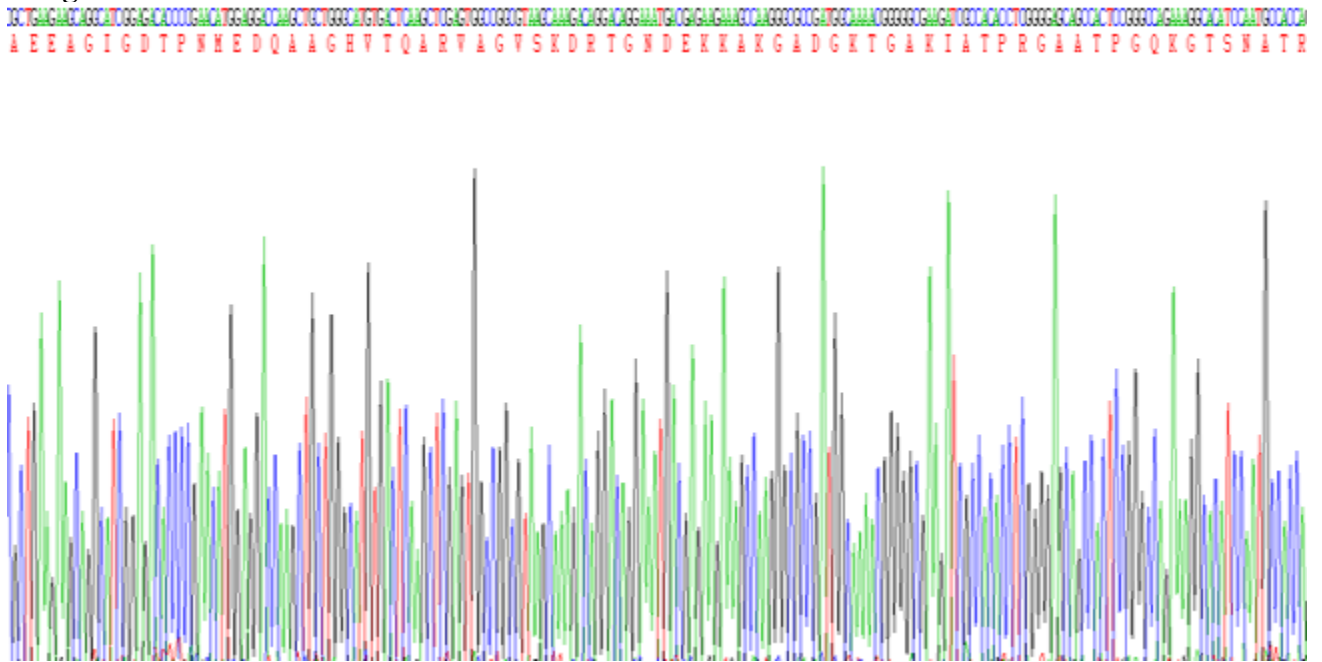


Figure. SDS-PAGE

[IMPORTANT NOTE]

The kit is designed for research use only, we will not be responsible for any issue if the kit was used in clinical diagnostic or any other procedures.