

Recombinant Phospholipase D (PLD) Instruction Manual

SIPC030Hu01

Homo sapiens (Human)

Source	Prokaryotic expression
Host	E.coli
Endotoxin Level	<1.0EU per 1µg (determined by the LAL method)
Subcellular Location	Membrane, Cytoplasm, Golgi apparatus, Endoplasmic reticulum lumen
Predicted Molecular Mass	43.4kDa
Accurate Molecular Mass	43kDa(Analysis of differences refer to the manual)
Residues & Tags	Thr725~Thr1074 with N-terminal His Tag
Buffer Formulation	20mM Tris, 150mM NaCl, pH8.0, containing 1mM EDTA, 1mM DTT, 0.01% SKL, 5% Trehalose and Proclin300.
Traits	Freeze-dried powder
Purity	> 90%
Isoelectric Point	5.7
Applications	Positive Control; Immunogen; SDS-PAGE; WB.

SEQUENCE

```
TTAHEL RYQVPGSVHA NVQLLRSAAD  
WSAGIKYHEE SIHAAYVHVI ENSRHYIYIE NQFFISCADD KVVFNKIGDA  
IAQRILKAHR ENQKYRVYVV IPLLPGFEGD ISTGGGNALQ AIMHFNYRTM  
CRGENSILGQ LKAELGNQWI NYISFCGLRT HAELEGNLVT ELIYVHSKLL  
IADDNTVIIG SANINDRSML GKRDSEMAVI VQDTETVPSV MDGKEYQAGR  
FARGLRLQCF RVVLGYLDDP SEDIQDPVSD KFFKEVWVST AARNATIYDK  
VFRCLPNDEV HNLIQLRDFI NKPVLAKEDP IRAEEELKKI RGFLVQFPFY  
FLSEESLLPS VGTKEAIVPM EVWT
```

USAGE

Reconstitute in 20mM Tris, 150mM NaCl (pH8.0) to a concentration of 0.1-1.0 mg/mL.
Do not vortex.

STORAGE

Avoid repeated freeze/thaw cycles. Store at 2-8°C for one month. Aliquot and store at -80°C for 12 months.

STABILITY

The thermal stability is described by the loss rate. The loss rate was determined by accelerated thermal degradation test, that is, incubate the protein at 37°C for 48h, and no obvious degradation and precipitation were observed. The loss rate is less than 5% within the expiration date under appropriate storage condition.

Image

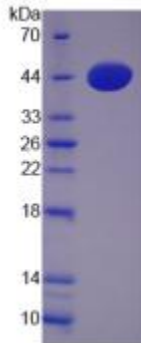


Figure. SDS-PAGE

[IMPORTANT NOTE]

The kit is designed for research use only, we will not be responsible for any issue if the kit was used in clinical diagnostic or any other procedures.