

# Recombinant Cyclin Dependent Kinase 6 (CDK6) Instruction Manual

SIPC038Hu01

**Homo sapiens (Human)**

<b>Source</b>	Prokaryotic expression
<b>Host</b>	E.coli
<b>Endotoxin Level</b>	<1.0EU per 1µg (determined by the LAL method)
<b>Subcellular Location</b>	Nucleus, Cytoplasm
<b>Predicted Molecular Mass</b>	40.6kDa
<b>Accurate Molecular Mass</b>	41kDa(Analysis of differences refer to the manual)
<b>Residues &amp; Tags</b>	Met1~Ala326 with N-terminal His Tag
<b>Buffer Formulation</b>	20mM Tris, 150mM NaCl, pH8.0, containing 0.01% SKL, 5% Trehalose.
<b>Traits</b>	Freeze-dried powder
<b>Purity</b>	> 95%
<b>Isoelectric Point</b>	6.0
<b>Applications</b>	Positive Control; Immunogen; SDS-PAGE; WB.

## SEQUENCE

```
MEKDGLCRAD QQYECVAEIG EGAYGKVFKA RDLKNGGRFV ALKRVRVQTG  
EEGMPLSTIR EVAVLRHLET FEHPNVVRLF DVCTVSRTDR ETKLTLVFEH  
VDQDLTTYLD KVPEPGVPTI TIKDMMFQLL RGLDFLHSHR VVHRDLKPQN  
ILVTSSGQIK LADFGGLARIY SFQMALTSVV VTLWYRAPEV LLQSSYATPV  
DLWSVGCIFA EMFRRKPLFR GSSDVDQLGK ILDVIGLPGE EDWPRDVALP  
RQAFHKSQAQ PIEKFVTDID ELGKDLLLKC LTFNPAKRIS AYSALSHPYF  
QDLERCKENL DSHLPPSQNT SELNTA
```

## USAGE

Reconstitute in ddH<sub>2</sub>O to a concentration of 0.1-1.0 mg/mL. Do not vortex.

## STORAGE

Avoid repeated freeze/thaw cycles. Store at 2-8°C for one month. Aliquot and store at -80°C for 12 months.

## **STABILITY**

The thermal stability is described by the loss rate. The loss rate was determined by accelerated thermal degradation test, that is, incubate the protein at 37°C for 48h, and no obvious degradation and precipitation were observed. The loss rate is less than 5% within the expiration date under appropriate storage condition.

### **Image**

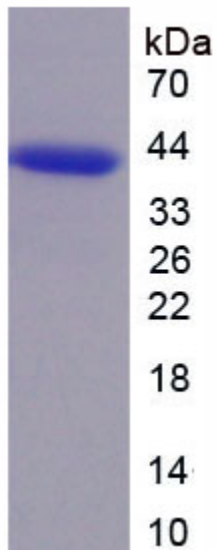


Figure. SDS-PAGE

### **[IMPORTANT NOTE]**

The kit is designed for research use only, we will not be responsible for any issue if the kit was used in clinical diagnostic or any other procedures.