

Recombinant Dystrophin Associated Glycoprotein 1 (DAG1) Instruction Manual

SIPC128Mu01

Mus musculus (Mouse)

Source	Prokaryotic expression
Host	E.coli
Endotoxin Level	<1.0EU per 1µg (determined by the LAL method)
Subcellular Location	Nucleus, Cytoplasm
Predicted Molecular Mass	44.1kDa
Accurate Molecular Mass	49kDa(Analysis of differences refer to the manual)
Residues & Tags	His28~Pro406 with N-terminal His Tag
Buffer Formulation	20mM Tris, 150mM NaCl, pH8.0, containing 1mM EDTA, 1mM DTT, 0.01% SKL, 5% Trehalose and Proclin300.
Traits	Freeze-dried powder
Purity	> 90%
Isoelectric Point	6.4
Applications	Positive Control; Immunogen; SDS-PAGE; WB.

SEQUENCE

```
                HWP SEPSEAVRDW KNQLEASMHS
VLSDFQEAVP TVVGIPDGTA VVGRSFRVSI PTDLIASSGE IIKVSAAGKE
ALPSWLHWD P HSHILEGLPL DTDKGVHYIS VSAARLGANG SHVPQTSSVF
SIEVYPEDHN EPQSVRAASS DPGEVVPSAC AADEPVTVLT VILDADLTKM
TPKQRIDLLN RMQSFSEVEL HNMKLVVVN NRLFDMSAFM AGPGNAKKVV
ENGALLSWKL GCSLNQNSVP DIRGVETPAR EGAMSAQLGY PVVGVWHIANK
KPTLPKRLRR QIHATPTPVT AIGPPTTAIQ EPPSRIVPTP TSPAIAAPTE
TMAPPVRDPV PGKPTVTIRT RGAI IQTPTL GPIQPTRVSE AGTTVPGQIR
PTLTIP
```

USAGE

Reconstitute in ddH₂O to a concentration of 0.1-1.0 mg/mL. Do not vortex.

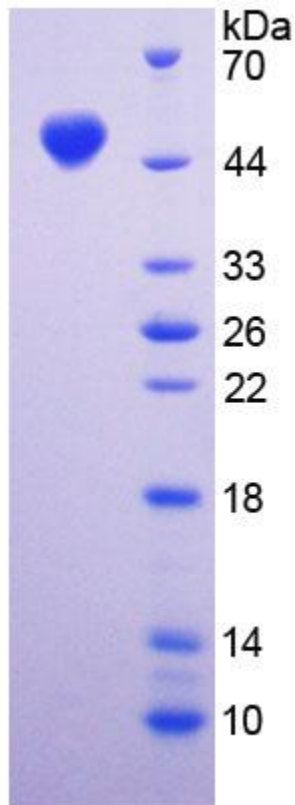
STORAGE

Avoid repeated freeze/thaw cycles. Store at 2-8°C for one month. Aliquot and store at -80°C for 12 months.

STABILITY

The thermal stability is described by the loss rate. The loss rate was determined by accelerated thermal degradation test, that is, incubate the protein at 37°C for 48h, and no obvious degradation and precipitation were observed. The loss rate is less than 5% within the expiration date under appropriate storage condition.

Image



15% SDS-PAGE

Figure. SDS-PAGE

[IMPORTANT NOTE]

The kit is designed for research use only, we will not be responsible for any issue if the kit was used in clinical diagnostic or any other procedures.