

# Recombinant Ladinin 1 (LAD1)

## Instruction Manual

**SIPC146Hu01**

**Homo sapiens (Human)**

<b>Source</b>	Prokaryotic expression
<b>Host</b>	E.coli
<b>Endotoxin Level</b>	<1.0EU per 1µg (determined by the LAL method)
<b>Subcellular Location</b>	Secreted
<b>Predicted Molecular Mass</b>	52.1kDa
<b>Accurate Molecular Mass</b>	52kDa(Analysis of differences refer to the manual)
<b>Residues &amp; Tags</b>	Met1~Glu192 with N-terminal His and GST Tag
<b>Buffer Formulation</b>	100mMNaHCO <sub>3</sub> , 500mMNaCl, pH8.3, containing 1mM EDTA, 1mM DTT, 0.01% SKL, 5% Trehalose and Proclin300.
<b>Traits</b>	Freeze-dried powder
<b>Purity</b>	> 90%
<b>Isoelectric Point</b>	6.7
<b>Applications</b>	Positive Control; Immunogen; SDS-PAGE; WB.

### SEQUENCE

```
MAVSRKDWSA LSSLARQRTL EDEEEQERER RRRHRNLSST TDDEAPRLSQ  
NGDRQASASE RLPSVEEA EV PKPLPPASKD EDEDIQSILR TRQERRQRRQ  
VVEAAQAPIQ ERLEAAEGRN SLSPVQATQK PLVSKKELEI PPRRRLSREQ  
RGPWALEEES LVGREPEERK KGVPEKSPVL EKSSMPKKTA PE
```

### USAGE

Reconstitute in ddH<sub>2</sub>O to a concentration of 0.1-1.0 mg/mL. Do not vortex.

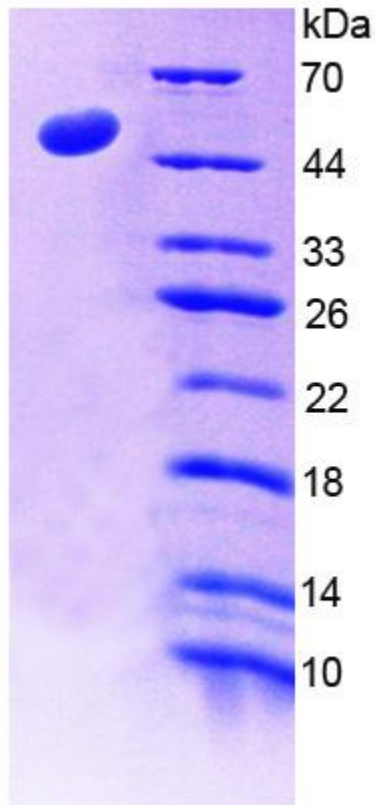
### STORAGE

Avoid repeated freeze/thaw cycles. Store at 2-8°C for one month. Aliquot and store at -80°C for 12 months.

## STABILITY

The thermal stability is described by the loss rate. The loss rate was determined by accelerated thermal degradation test, that is, incubate the protein at 37°C for 48h, and no obvious degradation and precipitation were observed. The loss rate is less than 5% within the expiration date under appropriate storage condition.

### Image



15% SDS-PAGE

SDS-PAGE Image

### **[IMPORTANT NOTE]**

The kit is designed for research use only, we will not be responsible for any issue if the kit was used in clinical diagnostic or any other procedures.

