

# Recombinant S-Phase Kinase Associated Protein 2 (SKP2) Instruction Manual

**SIPC195Hu01**

**Homo sapiens (Human)**

<b>Source</b>	Prokaryotic expression
<b>Host</b>	E.coli
<b>Endotoxin Level</b>	<1.0EU per 1µg (determined by the LAL method)
<b>Subcellular Location</b>	Nucleus, Cytoplasm
<b>Predicted Molecular Mass</b>	43.7KDa
<b>Accurate Molecular Mass</b>	41kDa(Analysis of differences refer to the manual)
<b>Residues &amp; Tags</b>	Lys43~Ala397 with N-terminal His Tag
<b>Buffer Formulation</b>	PBS, pH7.4, containing 0.01% SKL, 5% Trehalose.
<b>Traits</b>	Freeze-dried powder
<b>Purity</b>	> 90%
<b>Isoelectric Point</b>	6.1
<b>Applications</b>	Positive Control; Immunogen; SDS-PAGE; WB.

## SEQUENCE

```
                                KEEPDSEN  
IPQELLSNLG HPESPPRKRL KSKGSDKDFV IRRRPKLNRE NFPGVSWDSL  
PDELLLGIFS CLCLPELLKV SGVCKRWYRL ASDESLWQTL DLTGKNLHPD  
VTGRLLSQGV IAFRCPRFSM DQPLAEHFSP FRVQHMDLSN SVIEVSTLHG  
ILSQCSKLQN LSLEGLRLSD PIVNTLAKNS NLVRLNLSGC SGFSEFALQT  
LLSSCSRLDE LNLSWCFDFT EKHVQVAVAH VSETITQLNL SGYRKNLQKS  
DLSTLVRRCP NLVHLDLSDS VMLKNDCFQE FFQLNYLQHL SLSRCYDIIP  
ETLLELGEIP TLKTLQVFGI VPDGTLQLLK EALPHLQINC SHFTTIA
```

## USAGE

Reconstitute in 10mM PBS (pH7.4) to a concentration of 0.1-1.0 mg/mL. Do not vortex.

## STORAGE

Avoid repeated freeze/thaw cycles. Store at 2-8°C for one month. Aliquot and store at -80°C for 12 months.

## **STABILITY**

The thermal stability is described by the loss rate. The loss rate was determined by accelerated thermal degradation test, that is, incubate the protein at 37°C for 48h, and no obvious degradation and precipitation were observed. The loss rate is less than 5% within the expiration date under appropriate storage condition.

### **Image**

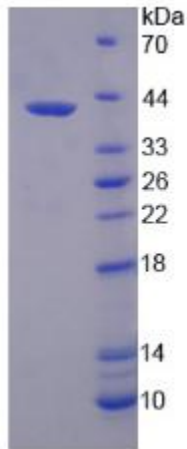


Figure. SDS-PAGE

### **[IMPORTANT NOTE]**

The kit is designed for research use only, we will not be responsible for any issue if the kit was used in clinical diagnostic or any other procedures.