

# Recombinant Carboxylesterase 1 (CES1) Instruction Manual

## SIPC302Mu02

### Mus musculus (Mouse)

<b>Source</b>	Prokaryotic expression
<b>Host</b>	E.coli
<b>Endotoxin Level</b>	<1.0EU per 1µg (determined by the LAL method)
<b>Subcellular Location</b>	Cytoplasm, Endoplasmic reticulum lumen
<b>Predicted Molecular Mass</b>	64.5kDa
<b>Accurate Molecular Mass</b>	60kDa(Analysis of differences refer to the manual)
<b>Residues &amp; Tags</b>	His19~Leu565 with N-terminal His Tag
<b>Buffer Formulation</b>	20mM Tris, 150mM NaCl, pH8.0, containing 0.01% SKL, 5% Trehalose.
<b>Traits</b>	Freeze-dried powder
<b>Purity</b>	> 95%
<b>Isoelectric Point</b>	5.9
<b>Applications</b>	Positive Control; Immunogen; SDS-PAGE; WB.

## SEQUENCE

```
HP SLPPVVHTVH GKVLGKYVTL EGFSQPVAVF
LGVPFAKPPL GSLRFAPPEP AEPWSFVKHT TSYPPLCYQN PEAALRLAEL
FTNQRKIIPH KFSEDCLYLN IYTPADLTQN SRLPVMWVIH GGGLVIDGAS
TYDGVPLAVH ENVVVVVIQY RLGWGGFFST EDEHSRGNWG HLDQVAALHW
VQDNIANFGG NPGSVTIFGE SAGGESVSVL VLSPLAKNLF HRAIAQSSVI
FNPCLFGRAA RPLAKKIAAL AGCKTTTSAA MVHCLRQKTE DELLEVSLKM
KFGTVDFLGD PRESYPFLPT VIDGVLLPKA PEEILAEKSF NTPVPMVGIN
KHEFGWIIPM FLDPLSERK LDQKTAASIL WQAYPILNIS EKLIPAAIEK
YLGGTEDPAT MTDLFLDLIG DIMFGVPSVI VSRSHRDAGA PTYMYEYQYR
PSFVSDDRPQ ELLGDHADEL FSVWGAPFLK EGASEEEINL SKMVMKFWAN
FARNGNPNGE GLPHWPEYDQ KEGYLQIGVP AQAHRKDK EVDFWTELRA
KETAERSSHR EHVEL
```

## USAGE

Reconstitute in ddH<sub>2</sub>O to a concentration less than or equal to 0.1mg/mL. Do not vortex.

## STORAGE

Avoid repeated freeze/thaw cycles. Store at 2-8°C for one month. Aliquot and store at -80°C for 12 months.

## STABILITY

The thermal stability is described by the loss rate. The loss rate was determined by accelerated thermal degradation test, that is, incubate the protein at 37°C for 48h, and no obvious degradation and precipitation were observed. The loss rate is less than 5% within the expiration date under appropriate storage condition.

## Image

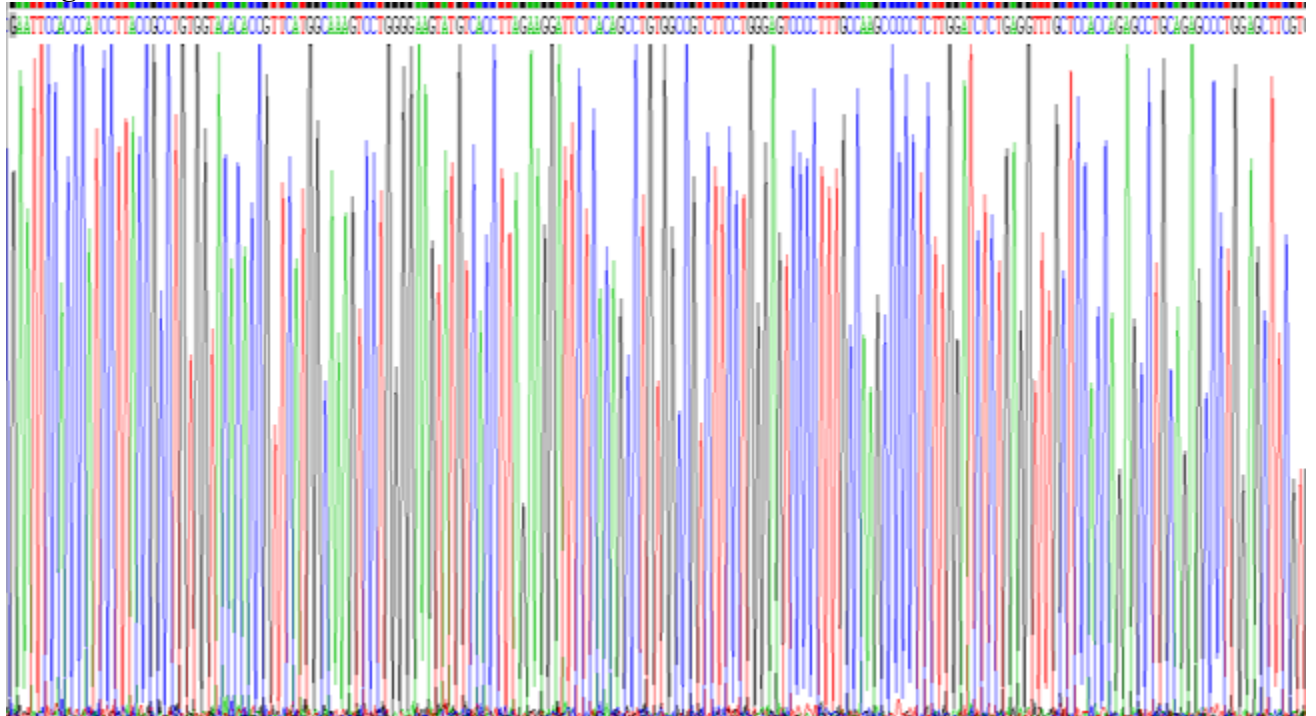


Figure. SDS-PAGE

## **[IMPORTANT NOTE]**

The kit is designed for research use only, we will not be responsible for any issue if the kit was used in clinical diagnostic or any other procedures.