

Recombinant Syntrophin Beta 1 (SNTb1) Instruction Manual

SIPC348Mu01

Mus musculus (Mouse)

Source	Prokaryotic expression
Host	E.coli
Endotoxin Level	<1.0EU per 1µg (determined by the LAL method)
Subcellular Location	Membrane
Predicted Molecular Mass	34.9kDa
Accurate Molecular Mass	38kDa(Analysis of differences refer to the manual)
Residues & Tags	Ala2~Gly297 with N-terminal His Tag
Buffer Formulation	100mMNaHCO ₃ , 500mMNaCl, pH8.3, containing 1mM EDTA, 1mM DTT, 0.01% SKL, 5% Trehalose and Proclin300.
Traits	Freeze-dried powder
Purity	> 97%
Isoelectric Point	8.7
Applications	Positive Control; Immunogen; SDS-PAGE; WB.

SEQUENCE

```
AVAAAAVAA PAGGGGARAQ RSGLLEVLVR DRWHKVLVNL SEDALVLSCE  
EGAAAYNGIG AATNGSFCRG SGTGHPVPGV AQAPDSPAGV RTAFTDLPEQ  
VPESISNQKR GVKVLKQELG GLGISIKGGK ENKMPILISK IFKGLAADQT  
QALYVGDAIL SVNGADLRDA THDEAVQALK RAGKEVLLEV KYMREATPYV  
KKGSPVSEIG WETPPPEPR LGGGSAEPLS SQSFSFHRDR KSIPLKMCYV  
TRNMTLADPE NRQLEIHSPD AKHTVILRSK DSATAQAWFS AIHSNAG
```

USAGE

Reconstitute in ddH₂O to a concentration of 0.1-1.0 mg/mL. Do not vortex.

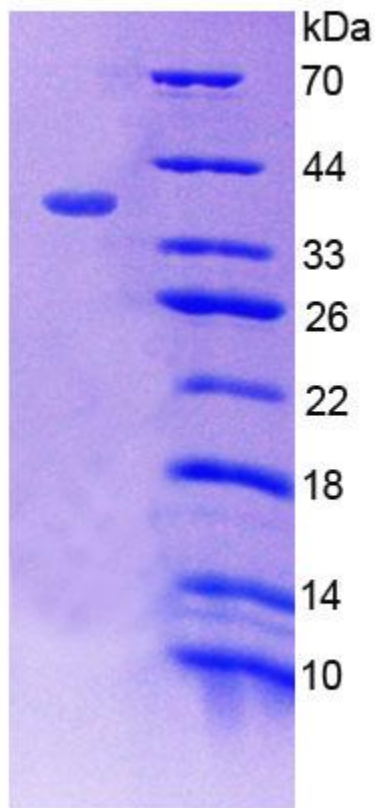
STORAGE

Avoid repeated freeze/thaw cycles. Store at 2-8°C for one month. Aliquot and store at -80°C for 12 months.

STABILITY

The thermal stability is described by the loss rate. The loss rate was determined by accelerated thermal degradation test, that is, incubate the protein at 37°C for 48h, and no obvious degradation and precipitation were observed. The loss rate is less than 5% within the expiration date under appropriate storage condition.

Image



15% SDS-PAGE

SDS-PAGE Image

[IMPORTANT NOTE]

The kit is designed for research use only, we will not be responsible for any issue if the kit was used in clinical diagnostic or any other procedures.