

# Recombinant Cathepsin W (CTSW) Instruction Manual

## SIPC371Mu01

### Mus musculus (Mouse)

<b>Source</b>	Prokaryotic expression
<b>Host</b>	E.coli
<b>Endotoxin Level</b>	<1.0EU per 1µg (determined by the LAL method)
<b>Subcellular Location</b>	Lysosome, Extracellular matrix
<b>Predicted Molecular Mass</b>	43.6kDa
<b>Accurate Molecular Mass</b>	44kDa(Analysis of differences refer to the manual)
<b>Residues &amp; Tags</b>	Asp22~Pro371 with N-terminal His Tag
<b>Buffer Formulation</b>	100mMNaHCO <sub>3</sub> , 500mMNaCl, pH8.3, containing 1mM EDTA, 1mM DTT, 0.01% SKL, 5% Trehalose and Proclin300.
<b>Traits</b>	Freeze-dried powder
<b>Purity</b>	> 90%
<b>Isoelectric Point</b>	9.2
<b>Applications</b>	Positive Control; Immunogen; SDS-PAGE; WB.

### SEQUENCE

```
DSLLTKDAG PRPLELKEVF KLFQIRFNRS  
YWNPAEYTRR LSIFAHNLAQ AQRLQQEDLG TAEFGETPFS DLTEEEFGQL  
YGQERSPERT PNMTKKVESN TWGESVPRTC DWRKAKNIIS SVKNQGSKC  
CWAMAAADNI QALWRIKHQQ FVDVSVQELL DCERCNGCN GGFVWDAYLT  
VLNNSGLASE KDYPFQGDRK PHRCLAKKYK KVAWIQDFTM LSNNEQIAIH  
YLAVHGPITV TINMKLLQHY QKGVIKATPS SCDPRQVDHS VLLVGFGEK  
EGMQTGTVLS HSRKRRHSSP YWILKNSWGA HWGEKGYFRL YRGNNTCGVT  
KYPFTAQVDS PVKKARTSCP P
```

### USAGE

Reconstitute in 100mM NaHCO<sub>3</sub>, 500mM NaCl (pH8.3) to a concentration of 0.1-1.0 mg/mL. Do not vortex.

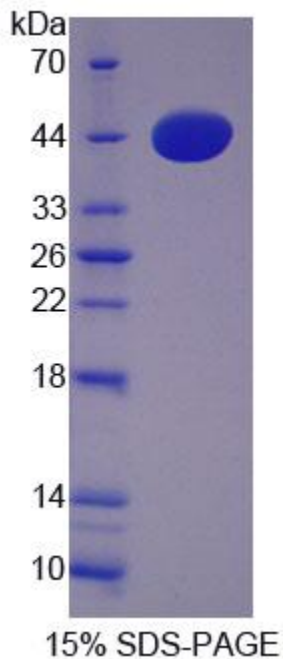
## STORAGE

Avoid repeated freeze/thaw cycles. Store at 2-8°C for one month. Aliquot and store at -80°C for 12 months.

## STABILITY

The thermal stability is described by the loss rate. The loss rate was determined by accelerated thermal degradation test, that is, incubate the protein at 37°C for 48h, and no obvious degradation and precipitation were observed. The loss rate is less than 5% within the expiration date under appropriate storage condition.

## Image



SDS-PAGE Image

## [IMPORTANT NOTE]

The kit is designed for research use only, we will not be responsible for any issue if the kit was used in clinical diagnostic or any other procedures.