

Recombinant Retinal Pigment Epithelium Specific Protein 65kDa (RPE65) Instruction Manual

SIPC592Hu01

Homo sapiens (Human)

Source	Prokaryotic expression
Host	E.coli
Endotoxin Level	<1.0EU per 1 μ g (determined by the LAL method)
Subcellular Location	Membrane, Cytoplasm
Predicted Molecular Mass	64.5kDa
Accurate Molecular Mass	65kDa(Analysis of differences refer to the manual)
Residues & Tags	Ser2~Ser533 with N-terminal His Tag
Buffer Formulation	PBS, pH7.4, containing 0.01% SKL, 5% Trehalose.
Traits	Freeze-dried powder
Purity	> 90%
Isoelectric Point	6.0
Applications	Positive Control; Immunogen; SDS-PAGE; WB.

SEQUENCE

```
SIQVEHPAG GYKKLFETVE ELSSPLTAHV TGRIPLWLTG SLLRCGPGLF EVGSEPFYHL FDGQALLHKF DFKEGHVTYH  
RRFIRTDAYV RAMTEKRIVI TefGTCAFPD PCKNIFSRFF SYFRGVEVTD NALVNVYPVG EDYYACTETN FITKINPETL  
ETIKQVDLCN YVSVNGATAH PHIENDGTvy NIGNCFGKNF SIAYNIVKIP PLQADKEDPI SKSEIVVQFP CSDRFKPSYV  
HSFGLTPNYI VfvETPVKIN LFKFLSSWSL WGANYMDCFE SNETMGVWLH IADKKRKKYL NnkYRTSPFN LFHHINTYED  
NGFLIVDLCC WKGFefVYNY LYLANLRENW EEVKKNARKA PQPEVRRYVL PLNIDKADTG KNLVTLpNTT ATAILCSDet  
IWLEPEVLFS GPRQAFefPQ INYQKYCGKP YTYAYGLGLN HFVPDRlCKL NVKTKETWW QEPDSYPSEP IFVSHPDALe  
EDDGVVLSVV VSPGAGQKPA YLLILNAKDL SEVARAEVEI NIPVTFHGLF KKS
```

USAGE

Reconstitute in 10mM PBS (pH7.4) to a concentration of 0.1-1.0 mg/mL. Do not vortex.

STORAGE

Avoid repeated freeze/thaw cycles. Store at 2-8°C for one month. Aliquot and store at -80°C for 12 months.

STABILITY

The thermal stability is described by the loss rate. The loss rate was determined by accelerated thermal degradation test, that is, incubate the protein at 37°C for 48h, and no obvious degradation and precipitation were observed. The loss rate is less than 5% within the expiration date under appropriate storage condition.

Image

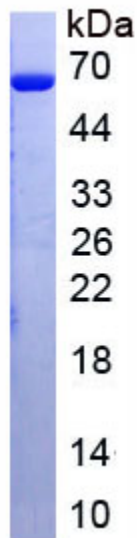


Figure. SDS-PAGE

[IMPORTANT NOTE]

The kit is designed for research use only, we will not be responsible for any issue if the kit was used in clinical diagnostic or any other procedures.