

Recombinant Calcium Modulating Ligand (CAMLG) Instruction Manual

SIPC750Hu01

Homo sapiens (Human)

| | |
|---------------------------------|---|
| Source | Prokaryotic expression |
| Host | E.coli |
| Endotoxin Level | <1.0EU per 1µg (determined by the LAL method) |
| Subcellular Location | Membrane |
| Predicted Molecular Mass | 22.1kDa |
| Accurate Molecular Mass | 28kDa(Analysis of differences refer to the manual) |
| Residues & Tags | Gly19~Glu184 with N-terminal His Tag |
| Buffer Formulation | 20mM Tris, 150mM NaCl, pH8.0, containing 1mM EDTA, 1mM DTT, 0.01% SKL, 5% Trehalose and Proclin300. |
| Traits | Freeze-dried powder |
| Purity | > 97% |
| Isoelectric Point | 8.8 |
| Applications | Positive Control; Immunogen; SDS-PAGE; WB. |

SEQUENCE

```
GS GLSASQRRAE LRRRKLMMNS EQRINRIMGF  
HRPGSGAEEE SQTQSKQQDS DKLNSLSVPS VSKRVVLGDS VSTGTTDQQG  
GVAEVKGTQL GDKLDSFIKP PECSSDVNLE LRQRNRGDLT ADSVQRGSRH  
GLEQYLSRFE EAMKLRKQLI SEKPSQEDGN TTEE
```

USAGE

Reconstitute in 20mM Tris, 150mM NaCl (pH8.0) to a concentration of 0.1-1.0 mg/mL.
Do not vortex.

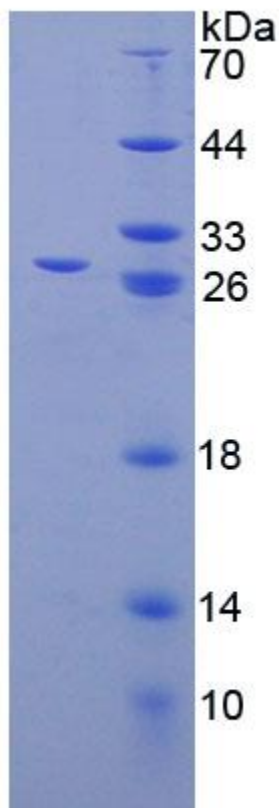
STORAGE

Avoid repeated freeze/thaw cycles. Store at 2-8°C for one month. Aliquot and store at -80°C for 12 months.

STABILITY

The thermal stability is described by the loss rate. The loss rate was determined by accelerated thermal degradation test, that is, incubate the protein at 37°C for 48h, and no obvious degradation and precipitation were observed. The loss rate is less than 5% within the expiration date under appropriate storage condition.

Image



15% SDS-PAGE

SDS-PAGE Image

[IMPORTANT NOTE]

The kit is designed for research use only, we will not be responsible for any issue if the kit was used in clinical diagnostic or any other procedures.