

Recombinant Cathepsin E (CTSE)

Instruction Manual

SIPC767Hu01

Homo sapiens (Human)

Source	Prokaryotic expression
Host	E.coli
Endotoxin Level	<1.0EU per 1µg (determined by the LAL method)
Subcellular Location	Endosome
Predicted Molecular Mass	67.3kDa
Accurate Molecular Mass	71kDa(Analysis of differences refer to the manual)
Residues & Tags	Ser20~Pro349 with N-terminal His and GST Tag
Buffer Formulation	20mM Tris, 150mM NaCl, pH8.0, containing 1mM EDTA, 1mM DTT, 0.01% SKL, 5% Trehalose and Proclin300.
Traits	Freeze-dried powder
Purity	> 90%
Isoelectric Point	4.5
Applications	Positive Control; Immunogen; SDS-PAGE; WB.

SEQUENCE

```
          S LHRVPLRRHP SLKKLRARS QLSEFWKSHN
LDMIQFTESC SMDQSAKEPL INYLDMEYFG TISIGSPPQN FTVIFDTGSS
NLWVPSVYCT SPACKTHSRF QPSQSSTYSQ PGQSFYIYQG TGSLSGIIGA
DQVSVEGLTV VGQQFGESVT EPGQTFVDAE FDGILGLGYP SLAVGGVTPV
FDNMMAQNLV DLPMFSVYMS SNPEGGAGSE LIFGGYDHSF FSGSLNWVPV
TKQAYWQIAL DNMLWSVPTL TSCRMSPSPL TESPIPSAQL PTPYWTSWME
CSSAAVAFKD LTSTLQLGPS GSWGMSFSDS FTQSLTVGIT VWDWPQQSP
```

USAGE

Reconstitute in 20mM Tris, 150mM NaCl (pH8.0) to a concentration of 0.1-1.0 mg/mL.
Do not vortex.

STORAGE

Avoid repeated freeze/thaw cycles. Store at 2-8°C for one month. Aliquot and store at -80°C for 12 months.

STABILITY

The thermal stability is described by the loss rate. The loss rate was determined by accelerated thermal degradation test, that is, incubate the protein at 37°C for 48h, and no obvious degradation and precipitation were observed. The loss rate is less than 5% within the expiration date under appropriate storage condition.

Image

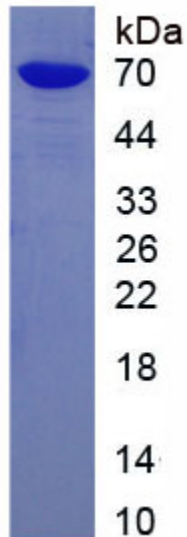


Figure. SDS-PAGE

[IMPORTANT NOTE]

The kit is designed for research use only, we will not be responsible for any issue if the kit was used in clinical diagnostic or any other procedures.