

Recombinant G Protein Beta 1 (GNb1) Instruction Manual

SIPC800Hu01

Homo sapiens (Human)

Source	Prokaryotic expression
Host	E.coli
Endotoxin Level	<1.0EU per 1µg (determined by the LAL method)
Subcellular Location	Membrane, Secreted, Cytoplasm
Predicted Molecular Mass	41.0kDa
Accurate Molecular Mass	44kDa(Analysis of differences refer to the manual)
Residues & Tags	Ser2~Asn340 with N-terminal His Tag
Buffer Formulation	PBS, pH7.4, containing 0.01% SKL, 5% Trehalose.
Traits	Freeze-dried powder
Purity	> 90%
Isoelectric Point	5.8
Applications	Positive Control; Immunogen; SDS-PAGE; WB.

SEQUENCE

```
SELDQLRQE AEQLKNQIRD ARKACADATL SQITNNIDPV GRIQMTRRT  
LRGHLAKIYA MHWGTD SRL VSASQDGKLI IWDSYTTNKV HAIPLRSSWV  
MTCAYAPSGN YVACGGLDNI CSIYNLKTRE GNVRSRELA GHTGYLSCCR  
FLDDNQIVTS SGDTTCALWD IETGQQTTF TGHTGDVMSL SLAPDTRLFV  
SGACDASAKL WDVREGMCRQ TFTGHESDIN AICFFPNGNA FATGSDDATC  
RLFDLRADQE LMTYSHDNII CGITSVSFSK SGRLLLAGYD DFNCNVWDAL  
KADRAGVLAG HDNRVSCLGV TDDGMAVATG SWDSFLKIWN
```

USAGE

Reconstitute in 10mM PBS (pH7.4) to a concentration of 0.1-1.0 mg/mL. Do not vortex.

STORAGE

Avoid repeated freeze/thaw cycles. Store at 2-8°C for one month. Aliquot and store at -80°C for 12 months.

STABILITY

The thermal stability is described by the loss rate. The loss rate was determined by accelerated thermal degradation test, that is, incubate the protein at 37°C for 48h, and no obvious degradation and precipitation were observed. The loss rate is less than 5% within the expiration date under appropriate storage condition.

Image

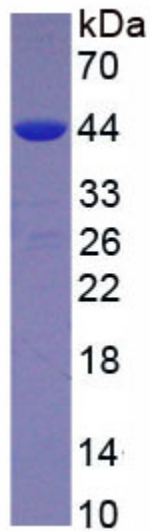


Figure. SDS-PAGE

[IMPORTANT NOTE]

The kit is designed for research use only, we will not be responsible for any issue if the kit was used in clinical diagnostic or any other procedures.