

Recombinant Reelin (RELN) Instruction Manual

SIPC885Hu01

Homo sapiens (Human)

Source	Prokaryotic expression
Host	E.coli
Endotoxin Level	<1.0EU per 1µg (determined by the LAL method)
Subcellular Location	Secreted
Predicted Molecular Mass	39.8kDa
Accurate Molecular Mass	40&44kDa(Analysis of differences refer to the manual)
Residues & Tags	Glu3142~Pro3460 with N-terminal His Tag
Buffer Formulation	PBS, pH7.4, containing 0.01% SKL, 5% Trehalose.
Traits	Freeze-dried powder
Purity	> 90%
Isoelectric Point	8.3
Applications	Positive Control; Immunogen; SDS-PAGE; WB.

SEQUENCE

```
EYTKDARSD SWQLVQTQCL PSSNSIGCS PFQFHEATY NSVNSSWKR ITIQLPDHVS SSATQFRWIQ KGEETEKQSW  
AIDHVIYIEA CPKLCSGHGY CTTGAICICD ESFQGDGCSV FSHDLPSYIK DNFESARVTE ANWETIQGGV IGSQCGQLAP  
YAHGDSLYFN GCQIRQAATK PLDLTRASKI MFVLQIGSMS QTDCNSDLS GPHAVDKAVL LQYSVNNGIT WHVIAQHQP  
DFTQAQRVSY NVPLEARMKG VLLRWWQPRH NGTGHDQWAL DHVEVVLVST RKQNYMMNFS RQHGLRHFYN  
RRRSLRRYP
```

USAGE

Reconstitute in 10mM PBS (pH7.4) to a concentration of 0.1-1.0 mg/mL. Do not vortex.

STORAGE

Avoid repeated freeze/thaw cycles. Store at 2-8°C for one month. Aliquot and store at -80°C for 12 months.

STABILITY

The thermal stability is described by the loss rate. The loss rate was determined by accelerated thermal degradation test, that is, incubate the protein at 37°C for 48h, and no obvious degradation and precipitation were observed. The loss rate is less than 5% within the expiration date under appropriate storage condition.

Image

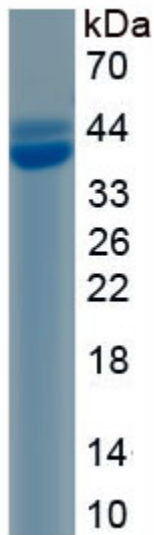


Figure. SDS-PAGE

[IMPORTANT NOTE]

The kit is designed for research use only, we will not be responsible for any issue if the kit was used in clinical diagnostic or any other procedures.