

Recombinant Reelin (RELN) Instruction Manual

SIPC885Hu03

Homo sapiens (Human)

Source	Prokaryotic expression
Host	E.coli
Endotoxin Level	<1.0EU per 1µg (determined by the LAL method)
Subcellular Location	Secreted, Extracellular matrix
Predicted Molecular Mass	27.4kDa
Accurate Molecular Mass	27kDa(Analysis of differences refer to the manual)
Residues & Tags	Glu2398~Leu2608 with N-terminal His Tag
Buffer Formulation	20mM Tris, 150mM NaCl, pH8.0, containing 0.01% SKL, 5% Trehalose.
Traits	Freeze-dried powder
Purity	> 97%
Isoelectric Point	6.6
Applications	Positive Control; Immunogen; SDS-PAGE; WB.

SEQUENCE

VDLGLSWHPL VRDCLPTNVE CSRYHLQRIL VSDTFNKWTR ITLPLPPYTR EYS
SQATRFWRHQ PAPFDKQQTW AIDNVYIGDG CIDMCSGHGR CIQGNCVCDE
QWGGLYCDDP ETSLPTQLKD NFNRAPSSQN WLTVNGGKLS TVCGAVASGM
ALHFSGGCSR LLVTVDLNL NAEFIQFYFM YGCLITPNNR NQGVLLLEYSV
NGGITWNL

USAGE

Reconstitute in 20mM Tris, 150mM NaCl (pH8.0) to a concentration of 0.1-1.0 mg/mL.
Do not vortex.

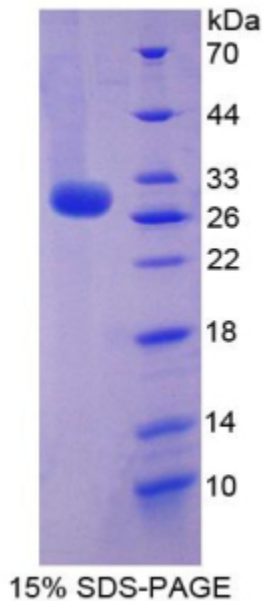
STORAGE

Avoid repeated freeze/thaw cycles. Store at 2-8°C for one month. Aliquot and store at -80°C for 12 months.

STABILITY

The thermal stability is described by the loss rate. The loss rate was determined by accelerated thermal degradation test, that is, incubate the protein at 37°C for 48h, and no obvious degradation and precipitation were observed. The loss rate is less than 5% within the expiration date under appropriate storage condition.

Image



SDS-PAGE Image

[IMPORTANT NOTE]

The kit is designed for research use only, we will not be responsible for any issue if the kit was used in clinical diagnostic or any other procedures.