

# Recombinant Reelin (RELN) Instruction Manual

## SIPC885Ra01

### *Rattus norvegicus* (Rat)

<b>Source</b>	Prokaryotic expression
<b>Host</b>	E.coli
<b>Endotoxin Level</b>	<1.0EU per 1µg (determined by the LAL method)
<b>Subcellular Location</b>	Secreted, Extracellular matrix
<b>Predicted Molecular Mass</b>	30.3kDa
<b>Accurate Molecular Mass</b>	33kDa(Analysis of differences refer to the manual)
<b>Residues &amp; Tags</b>	Glu2400~Leu2610 with N-terminal His Tag
<b>Buffer Formulation</b>	PBS, pH7.4, containing 0.01% SKL, 1mM DTT, 5% Trehalose .
<b>Traits</b>	Freeze-dried powder
<b>Purity</b>	> 97%
<b>Isoelectric Point</b>	5.8
<b>Applications</b>	Positive Control; Immunogen; SDS-PAGE; WB.

### SEQUENCE

Y S V D L G L S W H P L V R D C L P T N V E C S R Y H L Q R I L V S D T F N K W T R I T L P L P A Y  
T R S Q A T R F R W H Q P A P F D K Q Q T W A I D N V Y I G D G C L D M C S G H G R C I Q G S C V C  
D E Q W G G L Y C D E P E T S L P T Q L K D N F N R A P S N Q N W L T V N G G K L S T V C G A V A S  
G L A L H F S G G C S R L L V T V D L N L T N A E F I Q F Y F M Y G C L I T P S N R N Q G V L L E Y  
S V N G G I T W T L

### USAGE

Reconstitute in 10mM PBS (pH7.4) to a concentration of 0.1-1.0 mg/mL. Do not vortex.

### STORAGE

Avoid repeated freeze/thaw cycles. Store at 2-8°C for one month. Aliquot and store at -80°C for 12 months.

## STABILITY

The thermal stability is described by the loss rate. The loss rate was determined by accelerated thermal degradation test, that is, incubate the protein at 37°C for 48h, and no obvious degradation and precipitation were observed. The loss rate is less than 5% within the expiration date under appropriate storage condition.

### Image

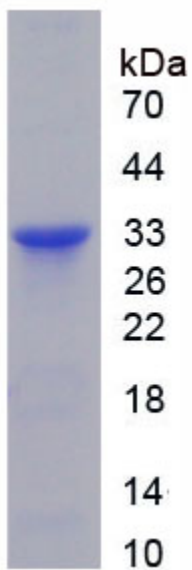


Figure. SDS-PAGE

### **[IMPORTANT NOTE]**

The kit is designed for research use only, we will not be responsible for any issue if the kit was used in clinical diagnostic or any other procedures.