

Recombinant Stabilin 1 (STAB1) Instruction Manual

SIPC900Hu01

Homo sapiens (Human)

Source	Prokaryotic expression
Host	E.coli
Endotoxin Level	<1.0EU per 1µg (determined by the LAL method)
Subcellular Location	Membrane
Predicted Molecular Mass	54.7kDa
Accurate Molecular Mass	55kDa(Analysis of differences refer to the manual)
Residues & Tags	Tyr356~Ser665 with His and TRxA Tag
Buffer Formulation	PBS, pH7.4, containing 0.01% SKL, 5% Trehalose.
Traits	Freeze-dried powder
Purity	> 90%
Isoelectric Point	8.9
Applications	Positive Control; Immunogen; SDS-PAGE; WB.

SEQUENCE

```
YGHLL HEVQKATQTG RVFLQLRVAV AMMDQGCRES LTTAGPFTVL  
VPSVSSFSSR TMMASLAQQL CRQHIIAGQH ILEDTRTQQT RRWWTLAGQE  
ITVTFNQFTK YSYKYKDQPQ QTFNIYKANN IAANGVFHVV TGLRWQAPSG  
TPGDPKRTIG QILASTEAFS RFETILENCG LPSILDGPGP FTVFAPSNEA  
VDSL RDGRLI YLFTAGLSKL QELVRYHIYN HGQLTVEKLI SKGRILTMAN  
QVLAVNISEE GRILLGPEGV PLQRVDVMAA NGVIHMLDGI LLPPTILPIL  
PKHCSEEQHK IVAGS
```

USAGE

Reconstitute in ddH₂O to a concentration of 0.1-0.5 mg/mL. Do not vortex.

STORAGE

Avoid repeated freeze/thaw cycles. Store at 2-8°C for one month. Aliquot and store at -80°C for 12 months.

STABILITY

The thermal stability is described by the loss rate. The loss rate was determined by accelerated thermal degradation test, that is, incubate the protein at 37°C for 48h, and no obvious degradation and precipitation were observed. The loss rate is less than 5% within the expiration date under appropriate storage condition.

Image

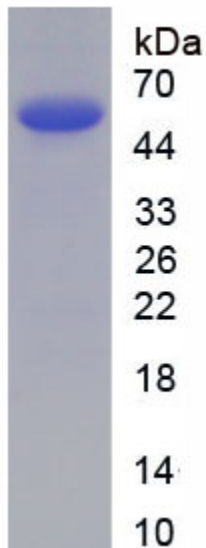


Figure. SDS-PAGE

[IMPORTANT NOTE]

The kit is designed for research use only, we will not be responsible for any issue if the kit was used in clinical diagnostic or any other procedures.