

Recombinant Synapsin I (SYN1) Instruction Manual

SIPC999Mu01

Mus musculus (Mouse)

Source	Prokaryotic expression
Host	E.coli
Endotoxin Level	<1.0EU per 1µg (determined by the LAL method)
Subcellular Location	Golgi apparatus
Predicted Molecular Mass	38.3kDa
Accurate Molecular Mass	38kDa(Analysis of differences refer to the manual)
Residues & Tags	Ala113~Arg420 with N-terminal His Tag
Buffer Formulation	100mMNaHCO ₃ , 500mMNaCl, pH8.3, containing 1mM EDTA, 1mM DTT, 0.01% SKL, 5% Trehalose and Proclin300.
Traits	Freeze-dried powder
Purity	> 97%
Isoelectric Point	6.7
Applications	Positive Control; Immunogen; SDS-PAGE; WB.

SEQUENCE

```
ARVLLVID EPHTDWAKYF KGKKIHGEID IKVEQAEFSD
LNLVAHANGG FSVDMEVLRN GVKVVRSLKP DFVLIRQHAF SMARNGDYRS
LVIGLQYAGI PSVNSLHSVY NFCDKPWVFA QMVRLHKKLG TEEFPLIDQT
FYPNHKEMLS STTYPVVVKM GHAHSGMGKV KVDNQHDFQD IASVVALTKT
YATAEPFIDA KYDVRVQKIG QNYKAYMRTS VSGNWKTNTG SAMLEQIAMS
DRYKLLWVDTC SEIFGGLDIC AVEALHGKDG RDHIIIEVVGS SMPLIGDHQD
EDKQLIVELV VNKMTQALPR
```

USAGE

Reconstitute in 100mM NaHCO₃, 500mM NaCl (pH8.3) to a concentration of 0.1-1.0 mg/mL. Do not vortex.

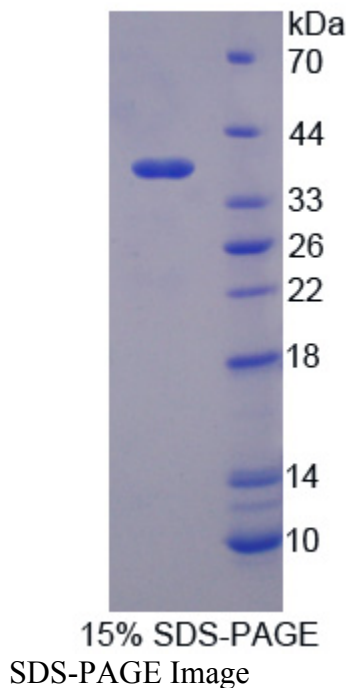
STORAGE

Avoid repeated freeze/thaw cycles. Store at 2-8°C for one month. Aliquot and store at -80°C for 12 months.

STABILITY

The thermal stability is described by the loss rate. The loss rate was determined by accelerated thermal degradation test, that is, incubate the protein at 37°C for 48h, and no obvious degradation and precipitation were observed. The loss rate is less than 5% within the expiration date under appropriate storage condition.

Image



[IMPORTANT NOTE]

The kit is designed for research use only, we will not be responsible for any issue if the kit was used in clinical diagnostic or any other procedures.