

Recombinant Calcium/Calmodulin Dependent Protein Kinase I (CAMK1) Instruction Manual

SIPD024Hu01

Homo sapiens (Human)

Source	Prokaryotic expression
Host	E.coli
Endotoxin Level	<1.0EU per 1µg (determined by the LAL method)
Subcellular Location	Cytoplasm
Predicted Molecular Mass	45.0kDa
Accurate Molecular Mass	45kDa(Analysis of differences refer to the manual)
Residues & Tags	Met1~Leu370 with N-terminal His Tag
Buffer Formulation	20mM Tris, 150mM NaCl, pH8.0, containing 1mM EDTA, 1mM DTT, 0.01%skl, 5% Trehalose and Proclin300.
Traits	Freeze-dried powder
Purity	> 90%
Isoelectric Point	5.1
Applications	Positive Control; Immunogen; SDS-PAGE; WB.

SEQUENCE

```
MLGAVEGPRW KQAEDIRDIY DFRDVLGTGA FSEVILAEDK RTQKLVAIKC  
IAKEALEGKE GSMENEIAVL HIKIHPNIVA LDDIYESGGH LYLMQLVSG  
GELFDRIVEK GFYTERDASR LIFQVLDAVK YLHDLGIVHR DLKPENLLYY  
SLDEDSKIMI SDFGLSKMED PGSVLSTACG TPGYVAPEVL AQKPYSKAVD  
CWSIGVIAYI LLCGYPPFYD ENDAKLFEQI LKAIEYFDSP YWDDISDSAK  
DFIRHLMKED PEKRFTCEQA LQHPWIAGDT ALDKNIHQSV SEQIKKNFAK  
SKWKQAFNAT AVVRHMRKLQ LGTSQEGGGQ TASHGELLTP VAGGPAAGCC  
CRDCCVEPGT ELSPTLPHQL
```

USAGE

Reconstitute in 20mM Tris, 150mM NaCl (pH8.0) to a concentration of 0.1-1.0 mg/mL.
Do not vortex.

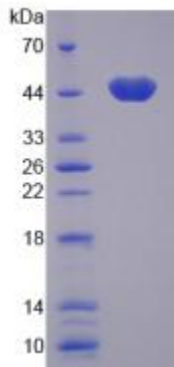
STORAGE

Avoid repeated freeze/thaw cycles. Store at 2-8°C for one month. Aliquot and store at -80°C for 12 months.

STABILITY

The thermal stability is described by the loss rate. The loss rate was determined by accelerated thermal degradation test, that is, incubate the protein at 37°C for 48h, and no obvious degradation and precipitation were observed. The loss rate is less than 5% within the expiration date under appropriate storage condition.

Image



SDS-PAGE Image

[IMPORTANT NOTE]

The kit is designed for research use only, we will not be responsible for any issue if the kit was used in clinical diagnostic or any other procedures.