

Recombinant Acid Phosphatase 6, Lysophosphatidic (ACP6) Instruction Manual

SIPD058Ra01

Rattus norvegicus (Rat)

Source	Prokaryotic expression
Host	E.coli
Endotoxin Level	<1.0EU per 1µg (determined by the LAL method)
Subcellular Location	Secreted
Predicted Molecular Mass	47.4kDa
Accurate Molecular Mass	47kDa(Analysis of differences refer to the manual)
Residues & Tags	Arg33~Glu413 with N-terminal His Tag
Buffer Formulation	100mMNaHCO ₃ , 500mMNaCl, pH8.3, containing 0.01% SKL, 5% Trehalose.
Traits	Freeze-dried powder
Purity	> 90%
Isoelectric Point	6.8
Applications	Positive Control; Immunogen; SDS-PAGE; WB.

SEQUENCE

```

                                                                RNLLELKM VQVFRHGAR
SPLKPLPLED QVEWNPKLE IPPQTRFEYT VANLAGGPKP HSHYDTEYHR
TVLRGGMFAG QLTKVGMQQM FALGERLRKN YVEDIPFLSP IYNPQEVFVR
STNMFRNLES TRCLLAGLFQ RQKESVIIHT DEaiseVLYP NYQSCWSLRE
KTRGRKKAAl SQPGILEDLE KVKAGVGIAD SDNVDFfill DNMVAEEAHS
LLSSPALKRF AQLIEQRAVD MALYMLQQED RESIQMAVGP FLYILEGNLL
KAVDpSTPPS KTRKMYLYAT HDVTLLPMLL ALGIFDNKWP PFAVDLTVEL
YQHqESKEWF VRLSYNGQEQ VPRGCPDKLC PLDKFLNTMS AYSVSPEKYR
RLCSQTRIME LGE
```

USAGE

Reconstitute in ddH₂O to a concentration of 0.1-1.0 mg/mL. Do not vortex.

STORAGE

Avoid repeated freeze/thaw cycles. Store at 2-8°C for one month. Aliquot and store at -80°C for 12 months.

STABILITY

The thermal stability is described by the loss rate. The loss rate was determined by accelerated thermal degradation test, that is, incubate the protein at 37°C for 48h, and no obvious degradation and precipitation were observed. The loss rate is less than 5% within the expiration date under appropriate storage condition.

Image

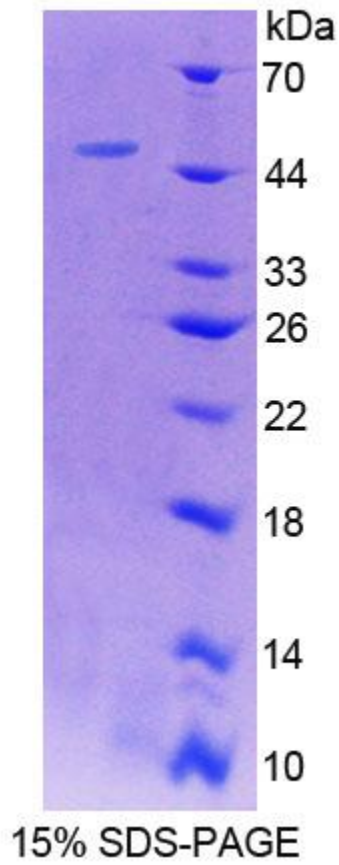


Figure. SDS-PAGE

[IMPORTANT NOTE]

The kit is designed for research use only, we will not be responsible for any issue if the kit was used in clinical diagnostic or any other procedures.