

Recombinant Cyclin Dependent Kinase 8 (CDK8) Instruction Manual

SIPD107Hu01

Homo sapiens (Human)

Source	Prokaryotic expression
Host	E.coli
Endotoxin Level	<1.0EU per 1µg (determined by the LAL method)
Subcellular Location	Nucleus
Predicted Molecular Mass	46.7kDa
Accurate Molecular Mass	47kDa(Analysis of differences refer to the manual)
Residues & Tags	Glu21~Asp392 with N-terminal His Tag
Buffer Formulation	PBS, pH7.4, containing 0.01% SKL, 1mM DTT, 5% Trehalose and Proclin300.
Traits	Freeze-dried powder
Purity	> 95%
Isoelectric Point	8.5
Applications	Positive Control; Immunogen; SDS-PAGE; WB.

SEQUENCE

```

                                EYEGCKVGRG TYGHVYKAKR KDGKDDKDYA
LKQIEGTGIS MSACREIALL RELKHPNVIS LQKVFLSHAD RKVWLLFDYA
EHDLWHIIKF HRASKANKKP VQLPRGMVKS LLYQILDGIH YLHANWVLHR
DLKPANILVM GEGPERGRVK IADMGFARLF NSPLKPLADL DPVVVTFWYR
APELLLGARH YTKAIDIWAI GCIFAELLTS EPIFHCRQED IKTSNPYHHD
QLDRIFNVMG FPADKDWEDI KKMPEHSTLM KDFRRNTYTN CSLIKYMEKH
KVKPDSKAFH LLQKLLTMDP IKRITSEQAM QDPYFLEDPL PTSDVFAGCQ
IPYPKREFLT EEEPDDKGDK KNQQQQQGNN HTNGTGHPGN QD
```

USAGE

Reconstitute in 10mM PBS (pH7.4) to a concentration of 0.1-1.0 mg/mL. Do not vortex.

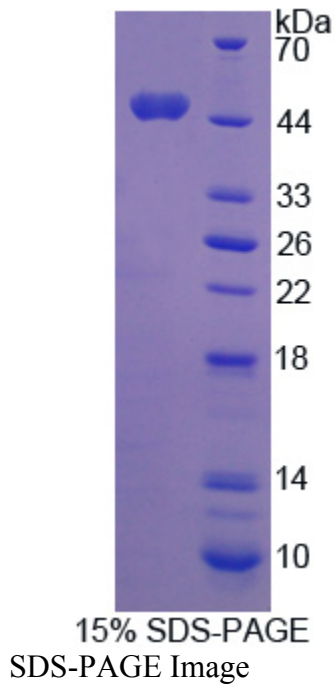
STORAGE

Avoid repeated freeze/thaw cycles. Store at 2-8°C for one month. Aliquot and store at -80°C for 12 months.

STABILITY

The thermal stability is described by the loss rate. The loss rate was determined by accelerated thermal degradation test, that is, incubate the protein at 37°C for 48h, and no obvious degradation and precipitation were observed. The loss rate is less than 5% within the expiration date under appropriate storage condition.

Image



[IMPORTANT NOTE]

The kit is designed for research use only, we will not be responsible for any issue if the kit was used in clinical diagnostic or any other procedures.