

Recombinant Cytochrome P450 Reductase (CPR) Instruction Manual

SIPD115Ra01

Rattus norvegicus (Rat)

Source	Prokaryotic expression
Host	E.coli
Endotoxin Level	<1.0EU per 1µg (determined by the LAL method)
Subcellular Location	Membrane
Predicted Molecular Mass	40.6kDa
Accurate Molecular Mass	46kDa(Analysis of differences refer to the manual)
Residues & Tags	Gly210~Glu578 with N-terminal His Tag
Buffer Formulation	100mMNaHCO ₃ , 500mMNaCl, pH8.3, containing 1mM EDTA, 1mM DTT, 0.01% SKL, 5% Trehalose and Proclin300.
Traits	Freeze-dried powder
Purity	> 97%
Isoelectric Point	5.5
Applications	Positive Control; Immunogen; SDS-PAGE; WB.

SEQUENCE

```
G NLEEDFITWR EQFWPAVCEF FGVEATGEES SIRQYELVVH
EDMDVAKVYT GEMGRLKSYE NQKPPFDAKN PFLAAVTANR KLNQGTERHL
MHLELDISDS KIRYESGDHV AVYPANDSAL VNQIGEILGA DLDVIMSLNN
LDEESNKKHP FPCPTTYRTA LTYYLDITNP PRTNVLYELA QYASEPSEQE
HLHKMASSSG EGKELYLSWV VEARRHILAI LQDYPSLRPP IDHLCELLPR
LQARYYSIAS SSKVHPNSVH ICAVAVEYEA KSGRVNKGVA TSWLRAKEPA
GENGGRALVP MFVRKSQFRL PFKSTTPVIM VGPGTGIAPF MGFIQERAWL
REQGKEVGET LLYYGCRSD EDYLYREE
```

USAGE

Reconstitute in 100mM NaHCO₃, 500mM NaCl (pH8.3) to a concentration of 0.1-1.0 mg/mL. Do not vortex.

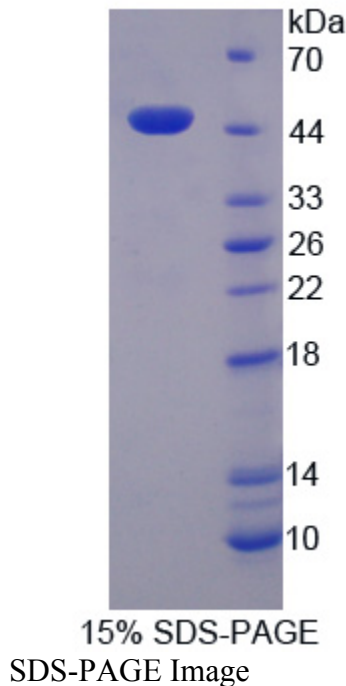
STORAGE

Avoid repeated freeze/thaw cycles. Store at 2-8°C for one month. Aliquot and store at -80°C for 12 months.

STABILITY

The thermal stability is described by the loss rate. The loss rate was determined by accelerated thermal degradation test, that is, incubate the protein at 37°C for 48h, and no obvious degradation and precipitation were observed. The loss rate is less than 5% within the expiration date under appropriate storage condition.

Image



[IMPORTANT NOTE]

The kit is designed for research use only, we will not be responsible for any issue if the kit was used in clinical diagnostic or any other procedures.