

Recombinant Protein Tyrosine Phosphatase Receptor Type N2 (PTPRN2) Instruction Manual

SIPD251Ra01

Rattus norvegicus (Rat)

Source	Prokaryotic expression
Host	E.coli
Endotoxin Level	<1.0EU per 1µg (determined by the LAL method)
Subcellular Location	Membrane
Predicted Molecular Mass	67.7kDa
Accurate Molecular Mass	65kDa(Analysis of differences refer to the manual)
Residues & Tags	Arg28~Lys600 with N-terminal His Tag
Buffer Formulation	PBS, pH7.4, containing 0.01% SKL, 1mM DTT, 5% Trehalose and Proclin300.
Traits	Freeze-dried powder
Purity	> 80%
Isoelectric Point	5.0
Applications	Positive Control; Immunogen; SDS-PAGE; WB.

SEQUENCE

```

RGR QLPGR LGCLF EDGLCGSLET
CVNDGVFGRC QKVPVMDTYR YEVPPGALLH LKVTLQKLSR TGFTWQDDYT
QRVIAQELAN LPKAYLWHGE ASGPARS LQQ NADNEKWFSL EREVALAKTL
RRYLPLYELL SQTPTANAHS RIDHETPAK GEDSSPENIL TYVAHTSALT
YPPATRAKYP DNLLRPF SRL QPDELS PKVD GDIDKQK LIA ALGAYTAQRL
PGENDPEPRY LVHGSARAPR PFSATALSQR WPPPPGDAKD SPSMDDDTLL
QSLLKDLQQN SEVDRLGPLK EEKADSVAGA IQSDPAEGSQ ESHGRGAEGQ
PREQTDAPET MLQDHR LSEV DDPVYKEVNR LSFQLGDLLK DYGSPLLPEG
PLLEKSSREE IKKSEQPEEV LSSEEETAGV EHVR SRTYSK DLFERKPNSE
PQPRRLEDQF QNRAPELWED EESLKLAAQG PPSGGLQLEV QPSEEQGYI
LTGNNPLSPE KKGQLMDQVA HILRVPSSFF ADIKVLGPAV TFKVSANIQN
MTTADVIKAA ADNKDQLEKA TGLTILQSGI RPKGKLLLP HQEEQEDSTK
```

USAGE

Reconstitute in 10mM PBS (pH7.4) to a concentration of 0.1-1.0 mg/mL. Do not vortex.

STORAGE

Avoid repeated freeze/thaw cycles. Store at 2-8°C for one month. Aliquot and store at -80°C for 12 months.

STABILITY

The thermal stability is described by the loss rate. The loss rate was determined by accelerated thermal degradation test, that is, incubate the protein at 37°C for 48h, and no obvious degradation and precipitation were observed. The loss rate is less than 5% within the expiration date under appropriate storage condition.

Image

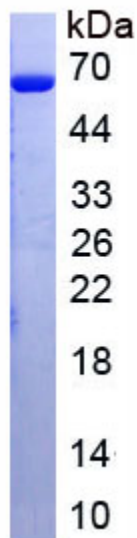


Figure. SDS-PAGE

[IMPORTANT NOTE]

The kit is designed for research use only, we will not be responsible for any issue if the kit was used in clinical diagnostic or any other procedures.