

Recombinant Glutamine synthetase (GS) Instruction Manual

SIPD387Ra01

Rattus norvegicus (Rat)

Source	Prokaryotic expression
Host	E.coli
Endotoxin Level	<1.0EU per 1µg (determined by the LAL method)
Subcellular Location	Secreted
Predicted Molecular Mass	43.5kDa
Accurate Molecular Mass	44kDa(Analysis of differences refer to the manual)
Residues & Tags	Met1~Asn373 with N-terminal His Tag
Buffer Formulation	100mMNaHCO ₃ , 500mMNaCl, pH8.3, containing 0.01% SKL, 5% Trehalose.
Traits	Freeze-dried powder
Purity	> 95%
Isoelectric Point	6.8
Applications	Positive Control; Immunogen; SDS-PAGE; WB.

SEQUENCE

```
MATSASSHLN KGIKQMYMNL PQGEKIQLMY IWVDGTGEG L RCKTRTLDCD  
PKCVEELPEW NFDGSSTFQS EGSNSDMYLH PVAMFRDPFR RDPNKLVFCE  
VFKYNRKPAE TNLRHSCKRI MDMVSSQHPW FGMEQEY TLM GTDGHPFGWP  
SNGFPGPQGP YYCGVGADKA YGRDIVEAHY RACLYAGIKI TGTNAEVMPA  
QWEFQIGPCE GIRMGDHLWV ARFILHRVCE DFGVIATFDP KPIPGNWNGA  
GCHTNFSTKA MREENGLRCI EEAIDKLSKR HQYHIRAYDP KGGLDNARRL  
TGFHETSININ DFSAGVANRS ASIRIPRIVG QEKKGYFEDR RPSANCDPYA  
VTEAIVRTCL LNETGDEPFQ YKN
```

USAGE

Reconstitute in ddH₂O to a concentration of 0.1-1.0 mg/mL. Do not vortex.

STORAGE

Avoid repeated freeze/thaw cycles. Store at 2-8°C for one month. Aliquot and store at -80°C for 12 months.

STABILITY

The thermal stability is described by the loss rate. The loss rate was determined by accelerated thermal degradation test, that is, incubate the protein at 37°C for 48h, and no obvious degradation and precipitation were observed. The loss rate is less than 5% within the expiration date under appropriate storage condition.

Image

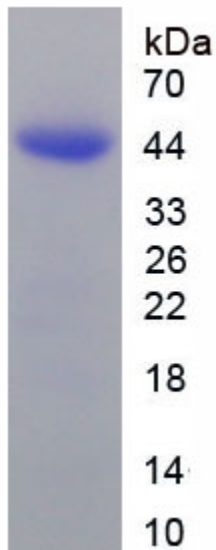


Figure. SDS-PAGE

[IMPORTANT NOTE]

The kit is designed for research use only, we will not be responsible for any issue if the kit was used in clinical diagnostic or any other procedures.